

**PLEASE CHECK WWW.MOLEX.COM FOR LATEST PART INFORMATION**

**Part Number:** [0913300024](#)  
**Status:** **Active**  
**Description:** 1.27mm (.050") Pitch Picoflex® PF-50 Header, Low Profile, SMT, Bottom Entry, 24 Circuits, Glow Wire Compatible

**Documents:**

[3D Model](#) [Product Specification PS-99020-0011 \(PDF\)](#)  
[Drawing \(PDF\)](#) [RoHS Certificate of Compliance \(PDF\)](#)

**General**

Product Family	PCB Headers
Series	<a href="#">91330</a>
Application	Wire-to-Board
Comments	Low Profile SMT
Product Name	Picoflex®

**Physical**

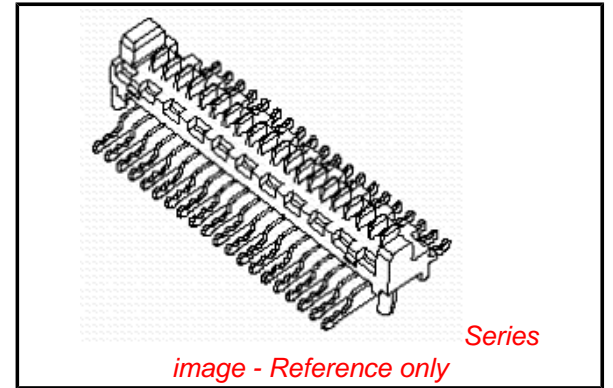
Breakaway	No
Circuits (Loaded)	24
Color - Resin	Natural
Durability (mating cycles max)	30
First Mate / Last Break	No
Glow-Wire Compliant	Yes
Guide to Mating Part	No
Keying to Mating Part	None
Lock to Mating Part	Yes
Material - Metal	Brass
Material - Plating Mating	Tin
Material - Resin	High Temperature Thermoplastic
Number of Rows	1
Orientation	Vertical
PCB Locator	Yes
PCB Retention	Yes
PCB Thickness Recommended (in)	0.062 In
PCB Thickness Recommended (mm)	1.60 mm
Packaging Type	Embossed Tape on Reel
Pitch - Mating Interface (in)	0.050 In
Pitch - Mating Interface (mm)	1.27 mm
Plating min: Mating (µin)	120
Plating min: Mating (µm)	3
Plating min: Termination (µin)	120
Plating min: Termination (µm)	3
Polarized to Mating Part	Yes
Polarized to PCB	Yes
Shrouded	No
Stackable	No
Surface Mount Compatible (SMC)	N/A
Temperature Range - Operating	-40°C to +105°C
Termination Interface: Style	Surface Mount

**Electrical**

Current - Maximum per Contact	1.2A
Voltage - Maximum	250V

**Material Info**

**Reference - Drawing Numbers**



**EU RoHS**

**ELV and RoHS Compliant**  
**REACH SVHC**  
**Contains SVHC: No**  
**Halogen-Free Status**

**China RoHS**



**Need more information on product environmental compliance?**

Email [productcompliance@molex.com](mailto:productcompliance@molex.com)  
 For a multiple part number RoHS Certificate of Compliance, [click here](#)

Please visit the [Contact Us](#) section for any non-product compliance questions.

**Search Parts in this Series**

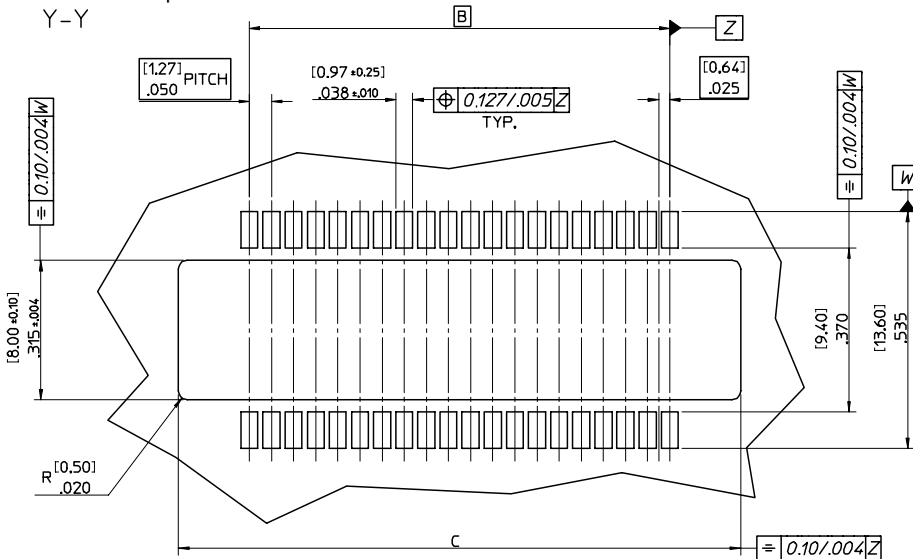
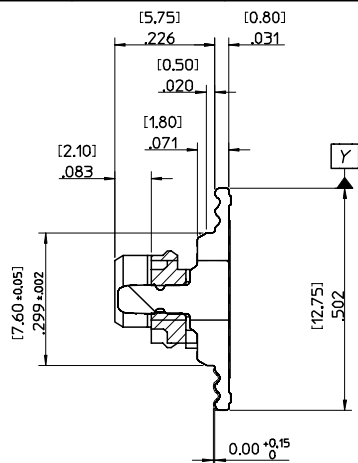
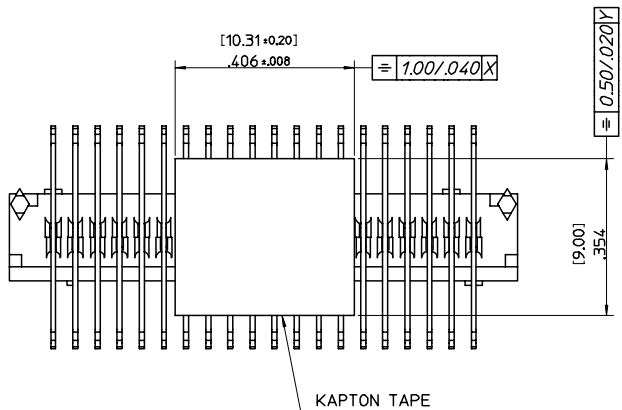
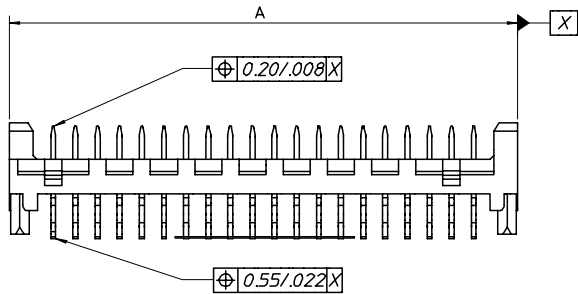
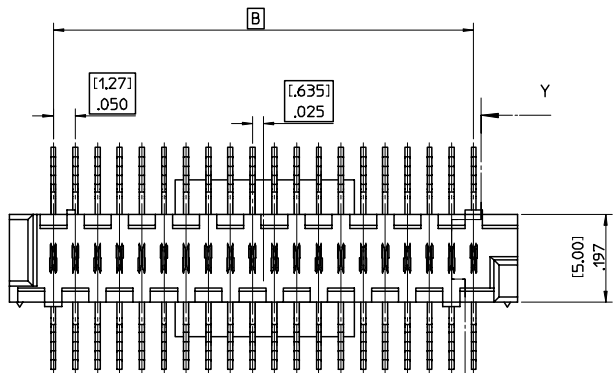
[91330Series](#)

**Mates With**

[90327 IDT Connector](#)

This document was generated on 04/22/2010

**PLEASE CHECK [WWW.MOLEX.COM](http://WWW.MOLEX.COM) FOR LATEST PART INFORMATION**



RECOMMENDED PCB LAYOUT  
THICKNESS=[1.57±0.13]/.062±.005

91330-0026	26	(36.80)/1.449	(31.75)/1.25	(37.33)/1.470
91330-0024	24	(34.26)/1.349	(29.21)/1.15	(34.81)/1.370
91330-0022	22	(31.72)/1.249	(26.67)/1.05	(32.27)/1.270
91330-0020	20	(29.18)/1.149	(24.13)/.95	(29.73)/1.170
91330-0018	18	(26.64)/1.049	(21.59)/.85	(27.19)/1.070
91330-0016	16	(24.10)/.949	(19.05)/.75	(24.65)/.970
91330-0014	14	(21.56)/.849	(16.51)/.65	(22.11)/.870
91330-0012	12	(19.02)/.749	(13.97)/.55	(19.57)/.770
91330-0010	10	(16.48)/.649	(11.43)/.45	(17.03)/.670
91330-0008	8	(13.94)/.549	(8.89)/.35	(14.49)/.570
91330-0006	6	(11.40)/.449	(6.35)/.25	(11.95)/.470
PART No.	CCT	DIM. A	DIM.B	DIM.C (+0.25) ±.010

- NOTES:  
 1.MATERIALS:  
 HOUSING: POLYAMIDE 46, 30% GLASS FILL, NATURAL, UL94 V-0  
 TERMINAL: BRASS [0.28]/.011 REF. THICK  
 KAPTON TAPE: POLYAMIDE [0.08]/.003 REF. THICK  
 2.PLATING:TIN  
 3.PACKAGING: TAPE AND REEL PER PK-91330-003

ADD CKT OPTION EC NO: E2005-1005 DRWN:GMC/SWE/005/05/24 CHKD:DM/RIART/005/05/24 APPR:JOENNEH/2005/05/27	QUALITY SYMBOLS	GENERAL TOLERANCES (UNLESS SPECIFIED)	SCALE 5:1	DESIGN UNITS METRIC	THIRD ANGLE PROJECTION	REVISE ON CAD ONLY	
	DESCRIPTION -0 C=0	mm	INCH	DIMENSION STYLE IN/MM		TITLE	
		4 PLACES ± --- ± ---	3 PLACES ± --- ± .004	DRAWN BY	DATE	PICOFLEX SMT HEADER THROUGH BOARD MOLEX INCORPORATED	
		2 PLACES ± 0.10 ± ---	1 PLACE ± --- ± ---	MOR	98/07/08		
REV	ANGULAR ± 2 °	MUST REMAIN WITHIN DIMENSIONS	CHECKED BY	DATE	MATERIAL NO.	DOCUMENT NO.	
			JHORGAN	98/07/08	SEE CHART	SD-91330-001	
			THIS DRAWING CONTAINS INFORMATION THAT IS PROPRIETARY TO MOLEX INCORPORATED AND SHOULD NOT BE USED WITHOUT WRITTEN PERMISSION		SHEET NO.	1 OF 1	