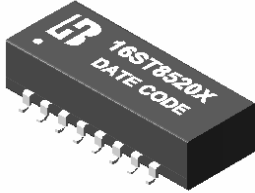


10/100 BASE-T TRANSFORMER

P/N:16ST8520X DATA SHEET

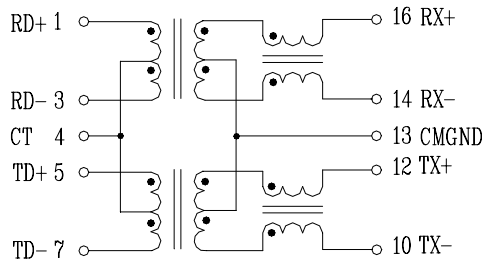
Feature



- Designed for 10/100 MB/s transmission over UTP-5 cable.
- Tested & qualified for use with national semiconductor's DP83840 Ethernet 10/100 PHY chip.
- Cable interface for isolation and low common mode emissions.
- 16-PIN SMD package for economic cost.
- Operating Temperature range: 0°C to +70°C.
- Storage temperature range: -25°C to +125°C.

| Electrical Specifications @ 25°C | | | | | | | | | | |
|----------------------------------|----------------------------|-------------------------|---|------------------------------|-----------------|------------------------|------------------|-----------------------|-------|-------|
| Part Number | Turns Ratio (±5%) | | OCL(uH Min) @100KHz/0.1V with 8mA DC Bias | C _{www} (pF Max) | L.L (uH Max) | DCR (Ω Max) | HI-POT (Vrms) | | | |
| | TX | RX | | | | | | | | |
| 16ST8520X | 1CT:1CT | 1CT:1CT | 350 | 50 | 0.6 | 0.9 | 1500 | | | |
| Continue | | | | | | | | | | |
| Part Number | Insertion Loss (dB Max) | Return Loss (dB Min) | | | | Cross talk (dB Min) | | DCMR (dB Min)TX/RX | | |
| | | 0.3-100MHz | 30MHz | 40MHz | 50MHz | 60-80MHz | 0.3-60MHz | 60-100MHz | 30MHz | 60MHz |
| 16ST8520X | -1.1 | -16 | -15 | -13 | -11 | -45 | -35 | -40 | -30 | -25 |

Schematic



Mechanical

