

VKL-7811 Series Klystron



CPI/Microwave Power Products' (MPP) offers klystrons for particle accelerator applications. The VKL-7811 series of klystrons provides up to 10 kilowatts CW at 1.3 or 1.497 GHz. Its robust design has a proven long life and reliability.



VKL-7811ST

Features

- Compact
- Water Cooled
- Permanent Magnet Focusing
- Coaxial or Waveguide Output
- Hundreds in Service
- Long Life
- Proven Reliability

Typical Operating Parameters

Product Type	Frequency (MHz)	Output Power (kW)	Drive Power (W)	Bandwidth (-3 dB) (MHz)	Beam Voltage (kV)	Beam Current (A)	Output Connector
VKL-7811W	1497	5.5	1.5	6.3	11.6	1.3	Modified 1 5/8 Coax
VKL-7811E	1300	11.0	3.5	4.0	15.0	1.95	1 5/8 Coax
VKL-7811ST	1300	11.0	3.5	4.0	15.0	1.95	WR-650 W/G Flange

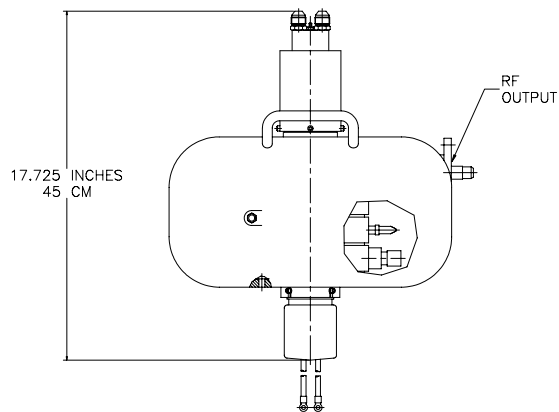
For additional information on these klystrons and other CPI/MPP products, visit our website at www.cpii.com/mpp, or contact: CPI/Microwave Products Division, 811 Hansen Way, Palo Alto, CA 94303-0750 Telephone: 650-846-3900, Fax: 650-856-0705, Email: marketing@mpp.cpii.com



VKL-7811 Series Klystron



VKL-7811W Layout Drawing

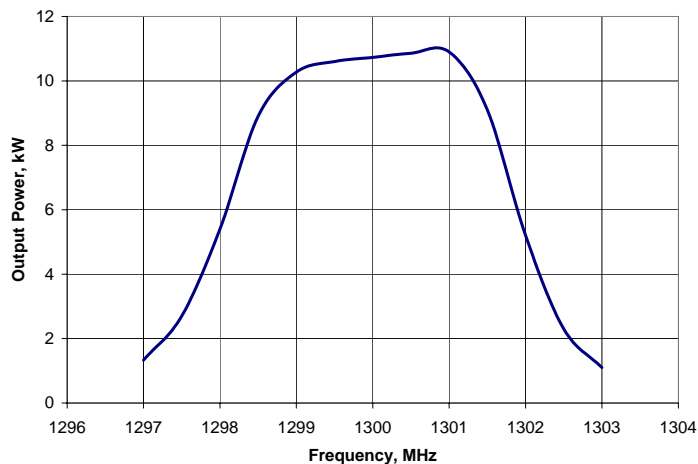


Frequency Response

Data from VKL-7811 ST, S/N 1009

Beam Voltage = 15 kV

Beam Current = 1.95 A

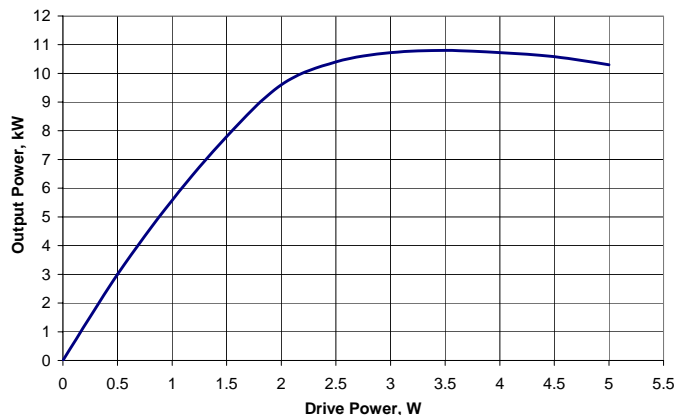


Transfer Curve

Data from VKL-7811 ST, S/N 1009

Beam Voltage = 15 kV

Beam Current = 1.95 A



For additional information on these klystrons and other CPI/MPP products, visit our website at www.cpii.com/mpp, or contact:
CPI/Microwave Products Division, 811 Hansen Way, Palo Alto, CA 94303-0750
Telephone: 650-846-3900, Fax: 650-856-0705, Email: marketing@mpp.cpii.com

