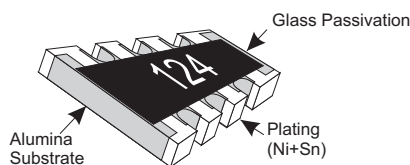


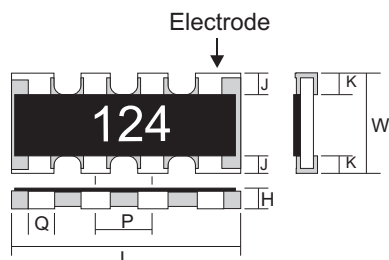
### CONSTRUCTION



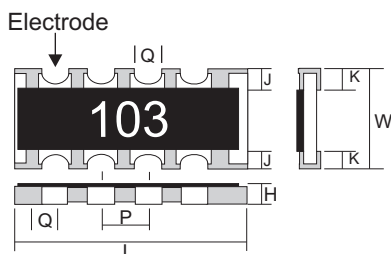
\*These resistors are lead free

### BODY STYLE

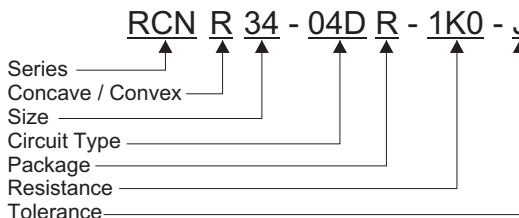
RCNR 24, RCNR 34, (Convex),  
RCN 35 Network



RCNC 24, RCNC 34 (Concave)

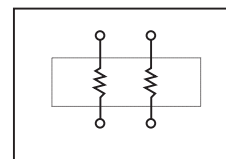


### PART NUMBER EXAMPLE

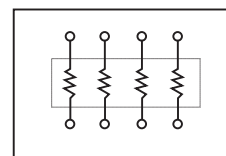


### CIRCUITS

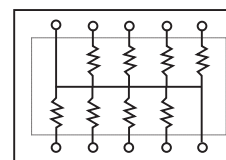
02D CIRCUIT



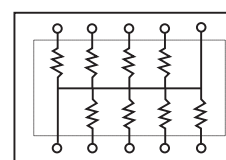
04D CIRCUIT



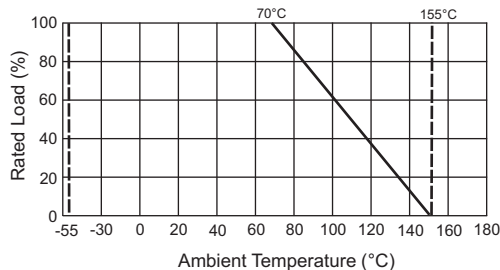
10R CIRCUIT



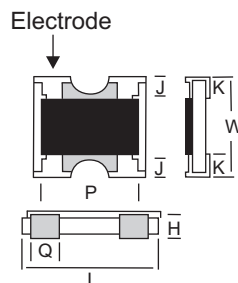
10S CIRCUIT



### DERATING CURVE



RCN22 / RCN 32



### DIMENSIONS

Series	Dimension								
	L	W	H	J	K	P	Q	Q1	Style
RCNR 22	1.0 ± 0.1	1.0 ± 0.1	0.33 ± 0.05	0.15 ± 0.1	0.25 ± 0.1	0.67 ± 0.1	0.34 ± 0.1	N/A	Array
RCNR 32	1.6 ± 0.15	1.6 ± 0.15	0.5 ± 0.04	0.3 ± 0.1	0.3 ± 0.1	0.97 ± 0.1	0.61 ± 0.1	N/A	Array
RCNR 24	2.0 ± 0.1	1.0 ± 0.1	0.4 ± 0.1	0.2 ± 0.1	0.2 ± 0.1	0.5 ± 0.1	0.3 ± 0.1	0.43 ± 0.1	Array
RCNC 24	2.0 ± 0.1	1.0 ± 0.1	0.4 ± 0.1	0.2 ± 0.1	0.2 ± 0.1	0.5 ± 0.1	0.3 ± 0.1	N/A	Array
RCNR 34	3.2 ± 0.2	1.6 ± 0.15	0.5 ± 0.1	0.3 ± 0.2	0.3 ± 0.2	0.8 ± 0.2	0.5 ± 0.1	0.61 ± 0.1	Array
RCNC 34	3.2 ± 0.2	1.6 ± 0.2	0.5 ± 0.1	0.4 ± 0.2	0.4 ± 0.2	0.8 ± 0.1	0.4 ± 0.1	N/A	Array
RCNR64	5.1 ± 0.2	1.6 ± 0.10	0.55 ± 0.15	0.55 ± 0.15	0.55 ± 0.15	1.3 ± 0.2	0.9 ± 0.1	N/A	Array
RCN 35	3.2 ± 0.2	1.6 ± 0.1	0.55 ± 0.1	0.3 ± 0.15	0.3 ± 0.15	0.32 ± 0.1	0.32 ± 0.1	0.53 ± 0.1	Network

### RATINGS & STANDARD RANGES

Series	Power Rating Per Element	Max Working Voltage (V)	Max Overload Voltage (V)	Zero Ohm Jumper Rated Current	Resistance Tolerance	Resistance Range (Ω)	Temperature Coefficient PPM / °C	Standard Circuit Types
RCNR 22	0.063W	25	50	1 amp	F (±1%), J (±5%)	10 ~ 1M	±200	02D
RCNR 24	0.063W	25	50	1 amp	F (±1%), J (±5%)	10 ~ 1M	±200	04D
RCN 32	0.1W	50	100	1 amp	F (±1%), J (±5%)	10 ~ 1M	±200	02D
RCNR 34	0.1W	50	100	1 amp	F (±1%), J (±5%)	10 ~ 1M	±200	04D
RCNC 24	0.063W	25	50	1 amp	F (±1%), J (±5%)	10 ~ 1M	±200	04D
RCNC 34	0.10W	50	100	1 amp	F (±1%), J (±5%)	10 ~ 1M	±200	04D
RCNR64	0.25W	200	400	2 amps	F (±1%), J (±5%)	10 ~ 1M	±200	04D
RCN 35	0.063W	25	50	N/A	F (±1%), J (±5%)	10 ~ 1M	±200	10S, 10R