



CHENMKO ENTERPRISE CO.,LTD

CH521S-30PT

Lead free devices

SURFACE MOUNT

SCHOTTKY BARRIER DIODE

VOLTAGE 30 Volts CURRENT 0.2 Ampere

APPLICATION

* Low current rectification and high speed switching

FEATURE

* Extremely small surface mounting type. (SC-79/SOD-523)
 * $I_o=200mA$ guaranteed despite size
 * Low VF. (VF=0.40V Typ. at 200mA)

CONSTRUCTION

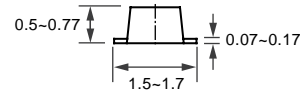
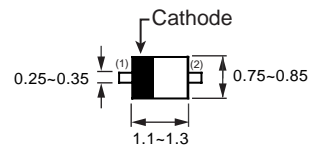
* Silicon epitaxial planar

MARKING

* C



SC-79/SOD-523



Dimensions in millimeters

SC-79/SOD-523

CIRCUIT



MAXIMUM RATINGS (At $T_A = 25^\circ C$ unless otherwise noted)

RATINGS	SYMBOL	CH521S-30PT	UNITS
Maximum Recurrent Peak Reverse Voltage	VRRM	30	Volts
Maximum RMS Voltage	VRMS	21	Volts
Maximum DC Blocking Voltage	VDC	30	Volts
Maximum Average Forward Rectified Current	I_o	0.2	Amps
Peak Forward Surge Current at 8.3 mSec single half sine-wave	IFSM	1.0	Amps
Typical Junction Capacitance between Terminal (Note 1)	CJ	14	pF
Maximum Operating Temperature Range	TJ	+125	$^\circ C$
Storage Temperature Range	TSTG	-40 to +125	$^\circ C$

ELECTRICAL CHARACTERISTICS (At $T_A = 25^\circ C$ unless otherwise noted)

CHARACTERISTICS	SYMBOL	CH521S-30PT	UNITS
Maximum Instantaneous Forward Voltage at $I_f= 200mA$	VF	0.50	Volts
Maximum Average Reverse Current at $V_R= 10V$	IR	30.0	uAmps

NOTES : 1. Measured at 1.0 MHz and applied reverse voltage of 1.0 volts.
 2. ESD sensitive product handling required.

RATING CHARACTERISTIC CURVES (CH521S-30PT)

FIG. 1 - FORWARD CHARACTERISTICS

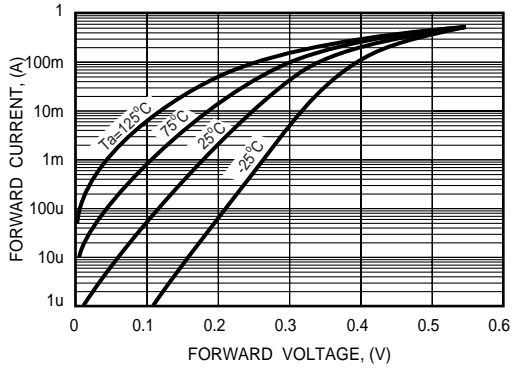


FIG. 2 - REVERSE CHARACTERISTICS

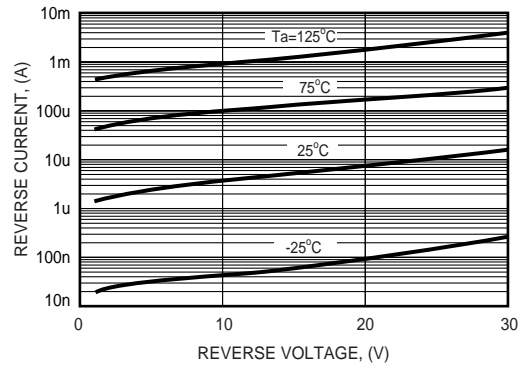


FIG. 3 - TYPICAL JUNCTION CAPACITANCE

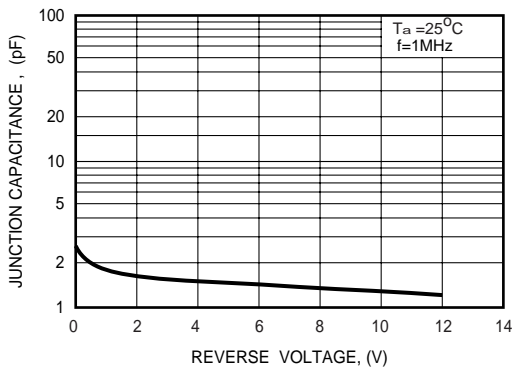


FIG. 4 - TYPICAL FORWARD CURRENT DERATING CURVE

