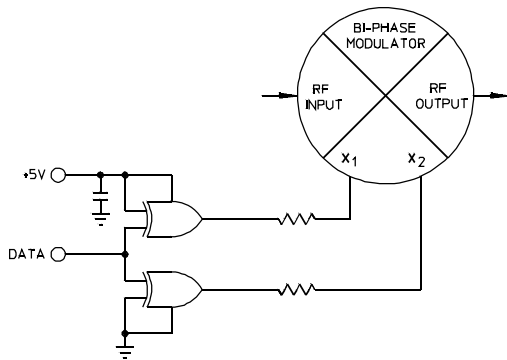




# BTM-2A Series

# BIPHASE MODULATOR

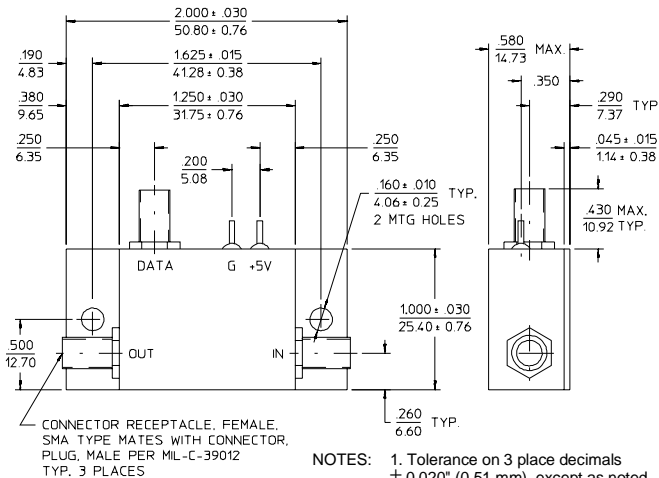
2 to 2500 MHz / Direct TTL Input / Uses Only +5V Supply / Fast Switching / SMA Connectors



## PRINCIPAL SPECIFICATIONS

Model Number	Frequency Range, MHz	Insertion Loss, dB,		Amplitude Balance, dB,		Phase Balance		Carrier Suppression, Typ.
		Max.	Typ.	Max.	Typ.	Max.	Typ.	
BTM-2A-250	2 – 500	3.5	2.5	0.3	0.10	±4°	±2°	- 40 dBc
BTM-2A-500	10 – 500	3	2	0.3	0.20	±3°	±1°	- 40 dBc
	500 – 1000	4	3	0.5	0.20	±4°	±2°	- 35 dBc
BTM-2A-1500	1000 – 2000	6	5	0.75	0.25	±5°	±2°	- 30 dBc
BTM-2A-2250	1500 – 2500	6	5	1.0	0.25	±5°	±2°	- 30 dBc

## A-Package Outline



NOTES: 1. Tolerance on 3 place decimals ± 0.020" (0.51 mm), except as noted.  
2. Dimensions in inches over mm.

## GENERAL SPECIFICATIONS

Impedance: 5 0 Ω nom.  
 RF Input Level: - 3 dBm max.  
 VSWR: 2.0:1 max.  
 Switching Speed: 5 nS typ.  
 50% Control to 90% RF  
 Data Signal Levels: TTL compatible  
 Power Supply: +5 VDC @ 25 mA  
 Weight, nominal: 1.5 oz (42 g)  
 Operating Temp: - 55° to +85°C

## AVAILABLE OPTIONS

Direct Input (No driver): As BPM series  
 Integral ECL Driver: As BEM series

## General Notes:

1. The BTM-2A series of Biphase Modulators covers the frequency range of 2 to 2500 MHz and includes interfacing circuitry so units may be driven directly using a +5V supply.
2. Customized versions are available for special frequency bands matched to your special applications.
3. Most units in this series are available in a variety of alternative packages such as the Meri-Pac™ or flatpack (see BTF-2A series). Units supplied without integral TTL drivers are available in the BPM-2A series.
4. All units comply with the applicable sections of MIL-M-28837 and may be supplied screened for compliance with additional specifications for military and space applications requiring the highest reliability.

22Feb96