



SOT-323 Plastic-Encapsulated Diode

DA204U SWITCHING DIODE

FEATURES:

Power dissipation

$$P_D: 200 \text{ mW (T}_{amb}=25^{\circ}\text{C)}$$

Collector current

$$I_F: 100 \text{ mA}$$

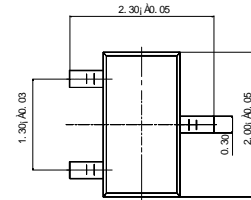
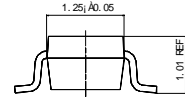
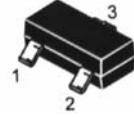
Collector-base voltage

$$V_R: 20 \text{ V}$$

Operating and storage junction temperature range

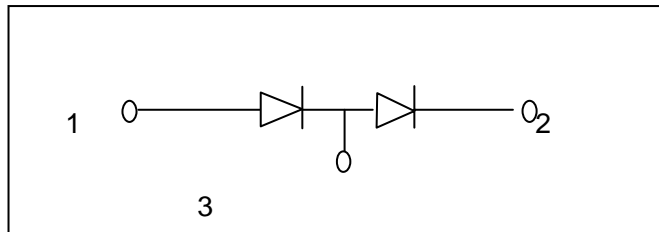
$$T_J, T_{stg}: -55^{\circ}\text{C to } +150^{\circ}\text{C}$$

SOT-323



Unit: mm

CIRCUIT:



MARKING: K

ELECTRICAL CHARACTERISTICS (T_{amb}=25°C unless otherwise specified)

Parameter	Symbol	Test conditions	MIN	MAX	UNIT
Reverse breakdown voltage	$V_{(BR)}$	$I_R=100\mu\text{A}$	20		V
Reverse voltage leakage current	I_R	$V_R=15\text{V}$		0.1	μA
Forward voltage	V_F	$I_F=10\text{mA}$		1	V