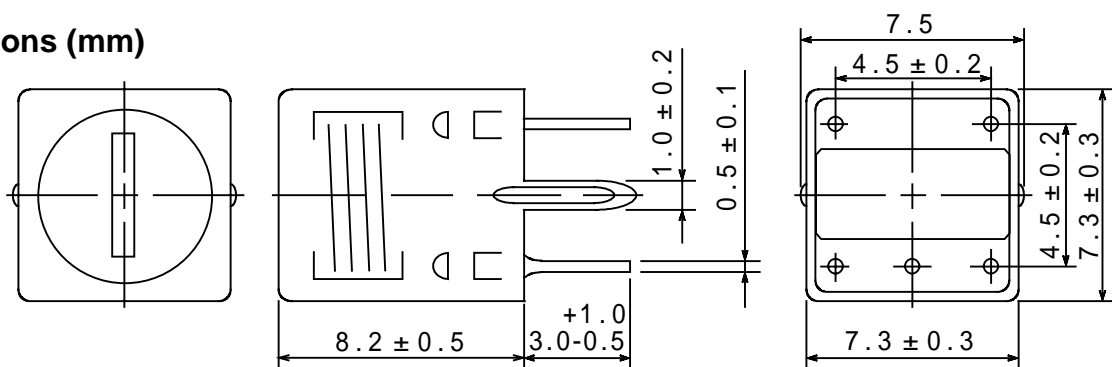


**Type: P-7GL/AM, P-7GL/FM, P-7GL/MW, P-7GL/SW**
**Product Description**

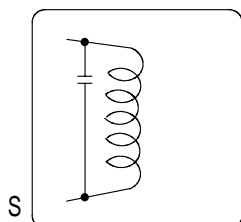
- 7.6 × 7.6mm Max.(L × W), 8.7mm Max. Height.
- Inductance:1~820μH Max.
- Operating frequency:20MHz Max.
- In addition to the reference versions of parameters shown here,custom designs are available to meet your exact requirements

**Feature**

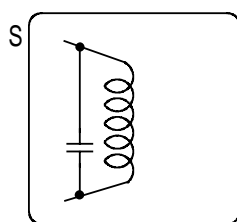
- Variable shielded type.
- AM,FM,MW,SW types are available.
- Internally assembled condenser is available.
- Ideally used in Radio (FM,AM,MW,SW),TV. Transceiver
- RoHS Compliance

**Dimensions (mm)**


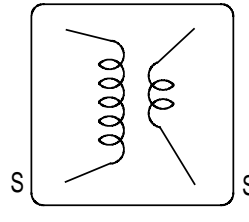
- \* Dimension does not include solder used on coil.
- \* Pin pitch shall be measured at the root of terminal.
- \* Dimension without tolerance are approx.

**Connection (Bottom View)**


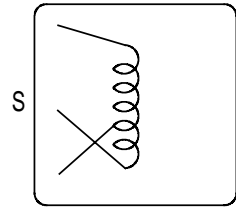
P-7GL/AM



P-7GL/FM



P-7GL/MW



P-7GL/SW

"S" is winding start.

**Type: P-7GL/AM, P-7GL/FM, P-7GL/MW, P-7GL/SW**
**Specification(P-7GL/AM) (Part No. S01085041)**

Item	( 1 - 3 )	Measuring Condition
Frequency	4 5 5 k H z $\pm 3\%$ Variable	_____
Unloaded Q	5 0 Min.	4 5 5 k H z
Capacity(Int.)	180 p F $\pm 1 0 \%$ Within	
Ext. stray capacity 5pF between (1-3) at measuring.		

**Specification( P-7GL/FM) (Part No. 2132-T003)**

Item	(3 - 1)	Measuring Condition
Frequency	10.7M H z $\pm 2 \%$ Variable	
Unloaded Q	6 0 Min.	10.7M H z
Capacity(Int.)	100 p F $\pm 10 \%$ Within	
Ext. stray capacity 5pF between (3-1) at measuring.		

**Specification( P-7GL/MW) (Part No. S01085055)**

Item	( 1 - 3 )	Measuring Condition
Inductance	130 $\mu$ H $\pm 4\%$ Variable	7 9 6 KHz
Unloaded Q	60 Min.	7 9 6 KHz

**Specification( P-7GL/SW) (Part No. S01080168)**

Item	( 2 - 3 )	Measuring Condition
Inductance	3.1 mH $\pm 5\%$ Variable	252 KHz
Unloaded Q	40 Min.	252 KHz