

# Surface Mount Bias-Tees

**NEW!**

**TCBT-6G**

Wideband 50 to 6000 MHz

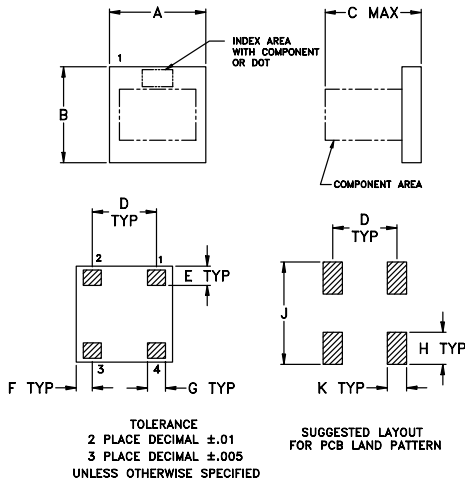
## Maximum Ratings

Operating Temperature	-45°C to 85°C
Storage Temperature	-55°C to 100°C
RF Power	30dBm max.
Voltage at DC port	25V max.
Input Current	200mA

## Pin Connections

RF	4
RF&DC	3
DC	1
ISOLATED	2

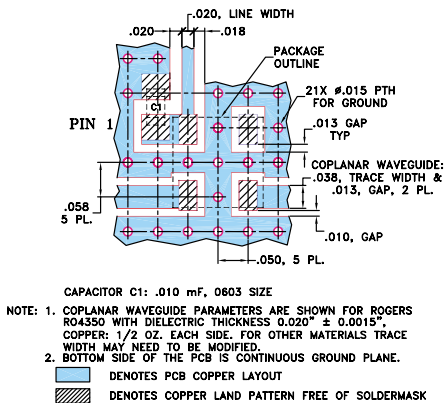
## Outline Drawing



## Outline Dimensions (inch/mm)

A	B	C	D	E	F	G
.150	.150	.150	.100	.030	.025	0.28
3.81	3.81	3.81	2.54	0.76	0.64	0.71
H	J	K	wt.			
.050	.160	.030	grams			
1.27	4.06	0.76	.10			

## Demo Board MCL P/N: TB-268 Suggested PCB Layout (PL-146)



## Features

- wideband, 50-6000 MHz
- low insertion loss, 0.7 dB typ.
- miniature surface mount 0.15"x0.15"
- patent pending

## Applications

- biasing amplifiers
- biasing of laser diodes
- biasing of active antennas



**BLUE CELL™**

CASE STYLE: GU1041  
 PRICE: \$11.95 ea. QTY (10-49)

## Electrical Specifications\*

MODEL NO.	FREQ. RANGE (MHz)	INSERTION LOSS** (dB)			ISOLATION** (dB) (RF port to DC port) (RF&DC port to DC port)			VSWR** (:1)									
		L	M	U	L	M	U	L	M	U							
TCBT-6G	50-6000	Typ.	Max.	Typ.	Max.	Typ.	Max.	Typ.	Max.	Typ.	Max.						
		0.2	0.8	0.7	1.8	1.1	2.5	52	38	28	18	19	17	1.05	1.5	1.1	1.3

L= 50-500 MHz      M=500-3000 MHz      U=3000-6000 MHz  
 \* Guaranteed to 25 dBm RF and 100mA current.  
 \*\* Tested with C external= 0.01 µF

## Schematic

