

# Monolithic crystal filter

## MQF21.4-1500/16

### Application

- 8 pol filter
- i.f.- filter
- use in mobile and stationary transceivers

### Limiting values

		Unit	Value
Center frequency	$f_0$	MHz	$21.4 \pm 750$ Hz
Insertion loss		dB	$\leq 3.5$
Pass band at 3.0 dB		kHz	$\pm 7.5$
Ripple in pass band	$f_0 \pm 6.0$ kHz	dB	$\leq 2.0$
Stop band attenuation	$f_0 \pm 17$ kHz	dB	$\geq 70$
	$f_0 \pm 22$ kHz	dB	$> 90$
Alternate attenuation	$f_0 \pm 22 \dots 500$ kHz	dB	$> 90$ except spurious

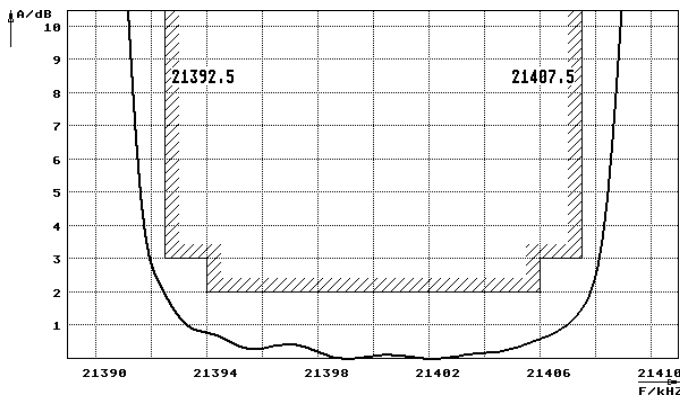
### Terminating impedance Z

R1    C1	Ohm/pF	910    25
R2    C2	Ohm/pF	910    25

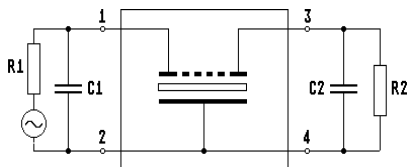
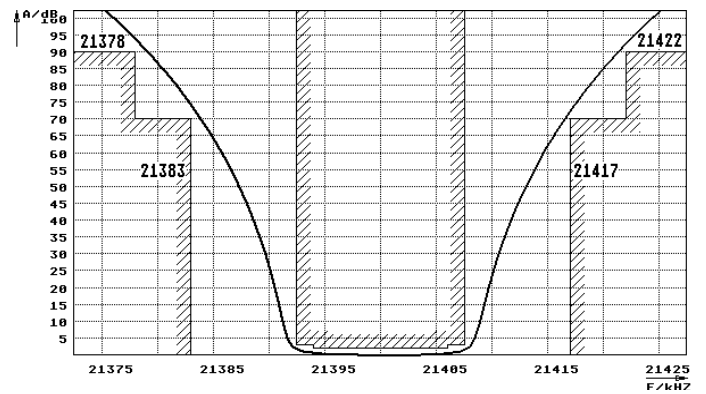
Operating temp. range	°C	-20... +70
-----------------------	----	------------

### Characteristics MQF21.4-1500/16

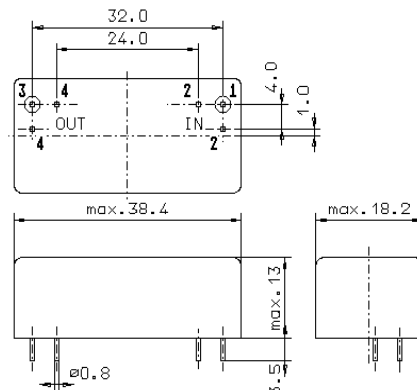
#### Pass band



#### Stop band



Pin connections: 1 Input  
2 Input-E  
3 Output  
4 Output-E



GM17