

Monolithic crystal filter

MQF21.4-1200/30



Application

- 4 pol filter
- i.f.- filter
- use in mobile and stationary transceivers

Limiting values

		Unit	Value
Center frequency	f_0	MHz	21.4
Insertion loss		dB	≤ 3.0
Pass band at 3.0 dB		kHz	± 6.00
Ripple in pass band	$f_0 \pm 4.80$ kHz	dB	≤ 1.0
Stop band attenuation	$f_0 \pm 25$ kHz	dB	≥ 50
	$f_0 \pm 200$ kHz	dB	> 80
Alternate attenuation		dB	> 60 except spurious
IMD (input power -10 dBm)	$f_1=f_0\pm 200, f_2=f_0\pm 400$ kHz	dB	> 85
VSWR	$f_0 \pm 4.80$ kHz		$< 2:1$

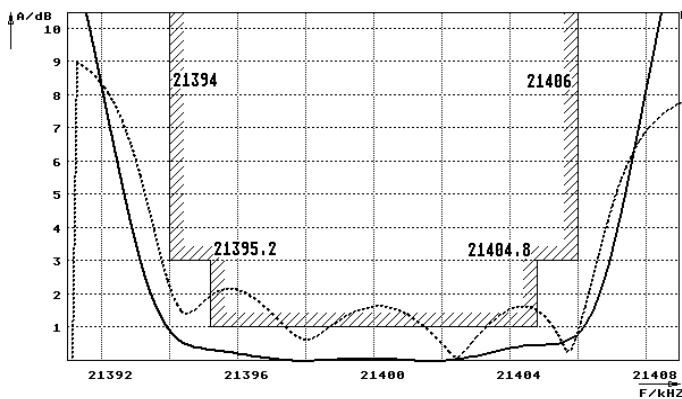
Terminating impedance Z

R1 C1	Ohm/pF	50 0
R2 C2	Ohm/pF	50 0

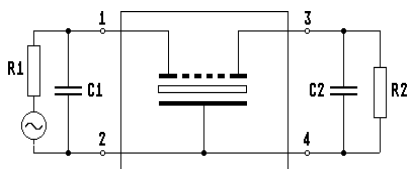
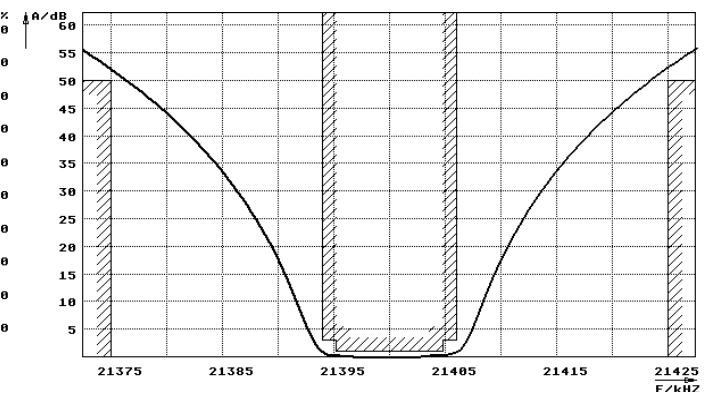
Operating temp. range ° C -20... +50

Characteristics MQF21.4-1200/30

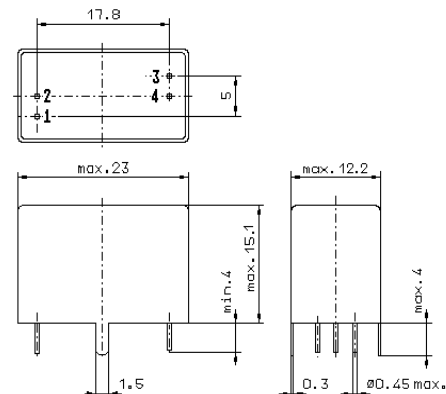
Pass band



Stop band



Pin connections: 1 Input
2 Input-E
3 Output
4 Output-E



GV6.2