

Monolithic crystal filter

MQF21.4-1000/07



Application

- 8 pol filter
- i.f.- filter
- use in mobile and stationary transceivers

Limiting values

		Unit	Value
Centre frequency	f_c	MHz	21.4 ± 600 Hz
Insertion loss		dB	≤ 4.0
Pass band at 3.0 dB		kHz	$\pm 4.9...5.5$
Ripple in pass band	$f_c \pm 4.0$ kHz	dB	≤ 1.0
Stop band attenuation	$f_o \pm 10$ kHz	dB	≥ 60
Alternate attenuation	$f_o \pm 200$ kHz	dB	> 70
Spurious responses		dB	> 70

Terminating impedance Z

R1 C1	Ohm/pF	50 0
R2 C2	Ohm/pF	50 0

Operating temp. range

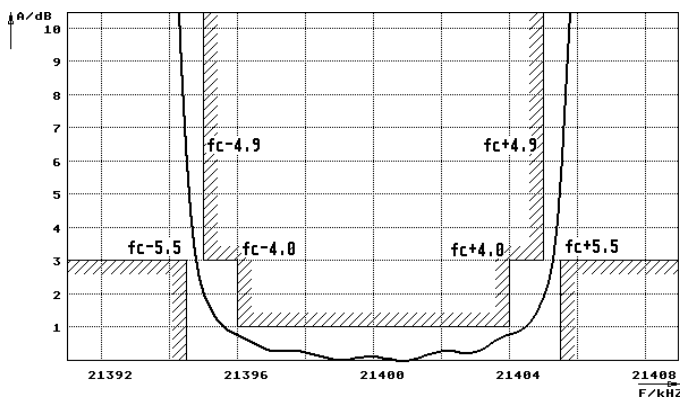
° C -30... +70

Storage temp. range

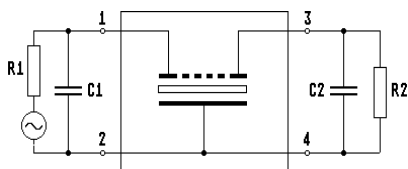
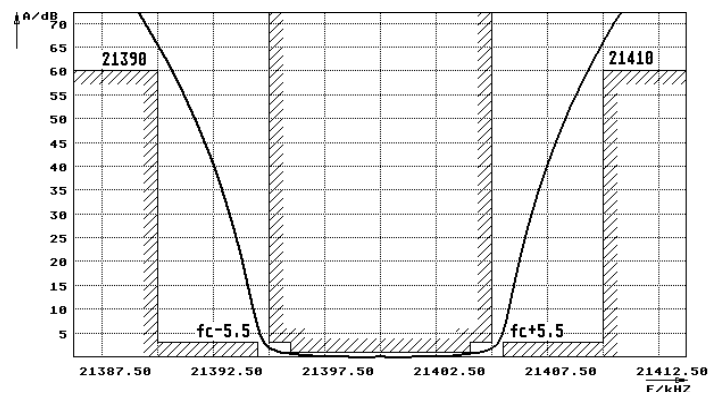
° C -55... +105

Characteristics MQF21.4-1000/07

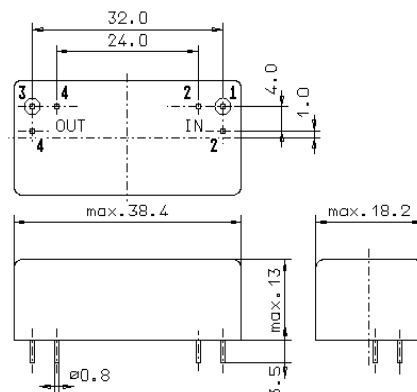
Pass band



Stop band



Pin connections: 1 Input
2 Input-E
3 Output
4 Output-E



GM17