

# Common Anode Silicon Dual Switching Diode

This Common Anode Silicon Epitaxial Planar Dual Diode is designed for use in ultra high speed switching applications. This device is housed in the SC-70 package which is designed for low power surface mount applications.

- Fast  $t_{rr}$ , < 10 ns
- Low  $C_D$ , < 15 pF
- Available in 8 mm Tape and Reel

Use LM1MA141/2WAT1 to order the 7 inch/3000 unit reel.

Use LM1MA141/2WAT3 to order the 13 inch/10,000 unit reel.

**LM1MA141WAT1**  
**LM1MA142WAT1**

**SC-70/SOT-323 PACKAGE**  
**COMMON ANODE**  
**DUAL SWITCHING DIODE**  
**40/80 V-100 mA**  
**SURFACE MOUNT**



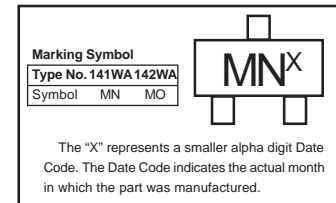
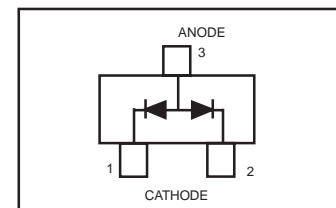
**CASE 419-04, STYLE 4**  
**SOT-323 / SC - 70**

## DEVICE MARKING

LM1MA141WAT1 = MN LM1MA142WAT2=MO

## MAXIMUM RATINGS (T<sub>A</sub> = 25°C)

Rating	Symbol	Value	Unit
Reverse Voltage	LM1MA141WAT1	V <sub>R</sub>	40 V <sub>dc</sub>
	LM1MA142WAT1		80
Peak Reverse Voltage	LM1MA141WAT1	V <sub>RM</sub>	40 V <sub>dc</sub>
	LM1MA142WAT1		80
Forward Current	Single	I <sub>F</sub>	100 mAdc
	Dual		150
Peak Forward Current	Single	I <sub>FM</sub>	225 mAdc
	Dual		340
Peak Forward Surge Current	Single	I <sub>FSM</sub> <sup>(1)</sup>	500 mAdc
	Dual		750



## THERMAL CHARACTERISTICS

Rating	Symbol	Max	Unit
Power Dissipation	P <sub>D</sub>	150	mW
Junction Temperature	T <sub>J</sub>	150	°C
Storage Temperature	T <sub>stg</sub>	-55 ~ +150	°C

## ELECTRICAL CHARACTERISTICS (T<sub>A</sub> = 25°C)

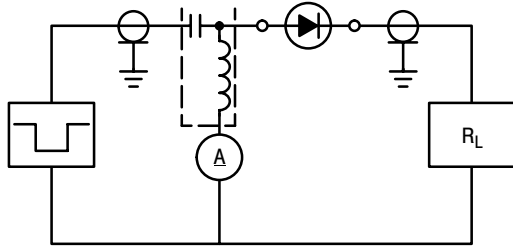
Characteristic	Symbol	Condition	Min	Max	Unit
Reverse Voltage Leakage Current	LM1MA141WAT1	I <sub>R</sub>	V <sub>R</sub> = 35 V	—	0.1 μAdc
	LM1MA142WAT1		V <sub>R</sub> = 75 V	—	0.1
Forward Voltage	V <sub>F</sub>	I <sub>F</sub> = 100 mA	—	1.2	Vdc
Reverse Breakdown Voltage	LM1MA141WAT1	V <sub>R</sub>	I <sub>R</sub> = 100 μA	40	— Vdc
	LM1MA142WAT1			80	—
Diode Capacitance	C <sub>D</sub>	V <sub>R</sub> =0, f=1.0 MHz	—	15	pF
Reverse Recovery	Time	t <sub>rr</sub> <sup>(2)</sup>	I <sub>F</sub> =10mA, V <sub>R</sub> =6.0V	—	10 ns
			R <sub>L</sub> =100Ω, I <sub>rr</sub> =0.1 I <sub>R</sub>		

1. t = 1 SEC

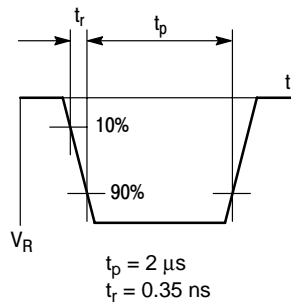
2. t<sub>rr</sub> Test Circuit

LM1MA141WAT1 LM1MA142WAT1

RECOVERY TIME EQUIVALENT TEST CIRCUIT



INPUT PULSE



OUTPUT PULSE

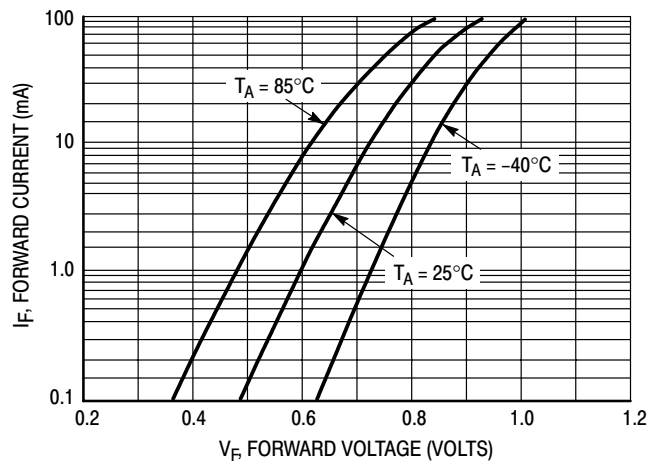
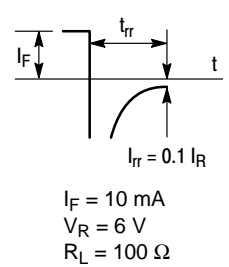


Figure 1. Forward Voltage

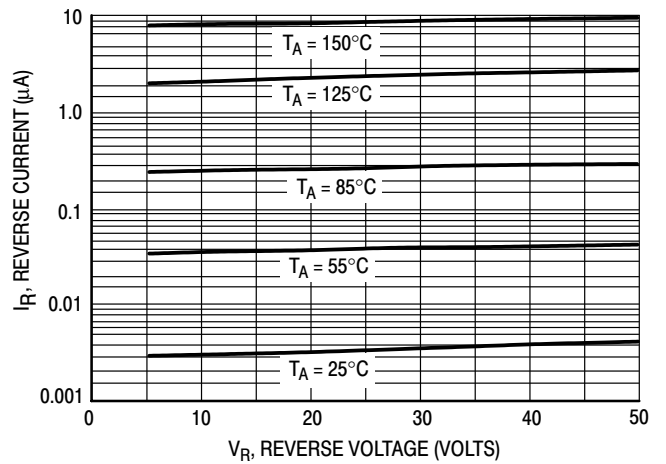


Figure 2. Reverse Current

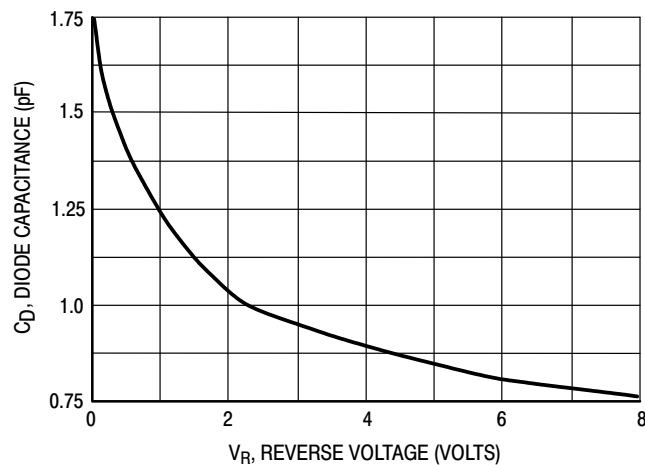


Figure 3. Diode Capacitance