

LG - 217

LG - 217 photointerrupter combines high output GaAs IRED with photo IC.

The sensor makes possible easy development of objectdetecting systems with high performance, high reliability and small equipment size.

FEATURES

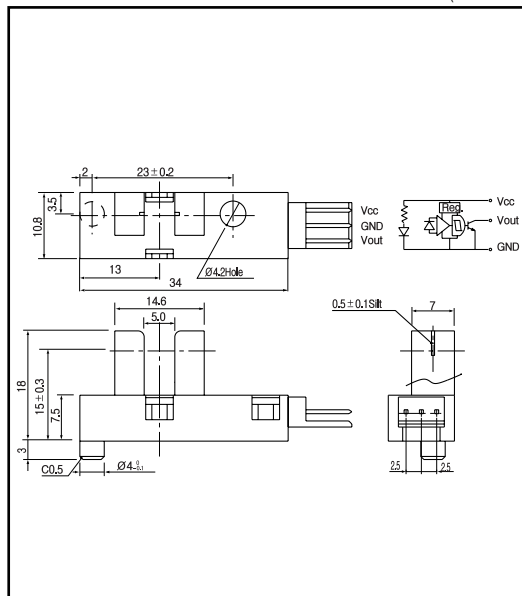
- Compatible to TTL and LSTTL
- Built Amplifier and Schmitt Trigger
- Easy

APPLICATIONS

- Floppy disk drives
- Copiers
- Facsimiles
- Paper sensors

DIMENSIONS

(Unit : mm)



MAXIMUM RATINGS

(Ta=25)

| Item | Symbol | Rating | Unit |
|--------------------------|---------------------------------|------------|------|
| Supply voltage | V _{cc} max. | 8 | V |
| Output voltage | V _{out} | 16 | V |
| Low level output current | I _{OL} | 16 | mA |
| Operating temp. | T _{opr.} ^{*1} | - 25 ~ +55 | |
| Storage temp. | T _{stg.} ^{*1} | - 40 ~ +85 | |

*1. The connector shall be inserted or pulled out at normal temperature.

ELECTRO-OPTICAL CHARACTERISTICS

(Ta=25)

| Item | Symbol | Conditions | Min. | Typ. | Max. | Unit. |
|---------------------------|-----------------|--|-------|---------|------|-------|
| Supply voltage | V _{cc} | | | 5 ± 10% | | V |
| High level output voltage | V _{OH} | V _{cc} =5V, R _L =47K | 45 | | | V |
| Low level output voltage | V _{OL} | V _{cc} =5V, I _{OL} =15mA | | | 0.4 | V |
| Output form | | | | NPN | | - |
| Frequency | f | V _{cc} =5V, R _L =47K | 3,000 | | | Hz |
| Current consumption | I _{cc} | V _{cc} =5V | | | 35 | mA |

