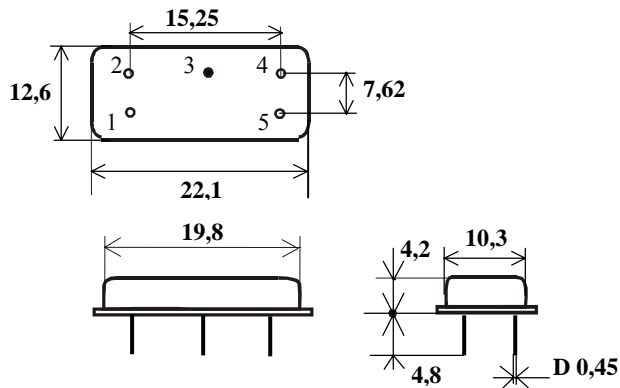
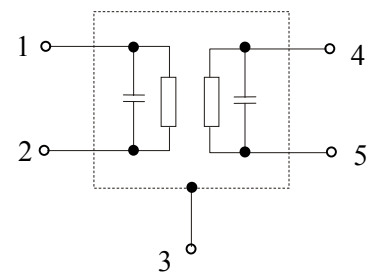


K4032	Vestigial Sideband Filter (IF= 38,0 MHz, standard D, full transmission)
--------------	--



Package DIP4-2B



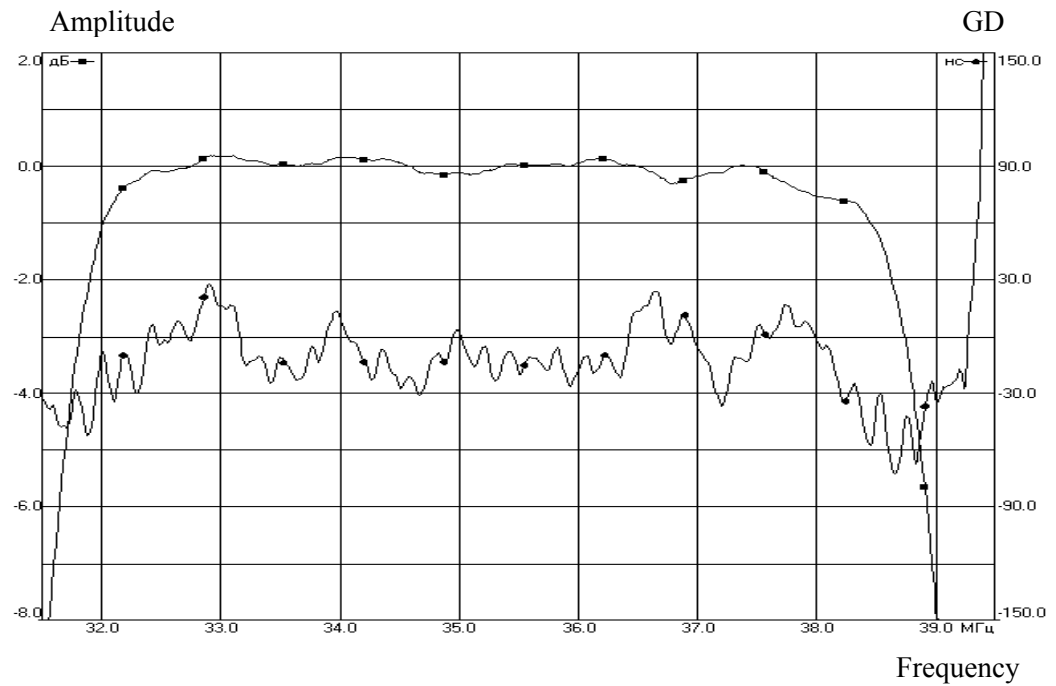
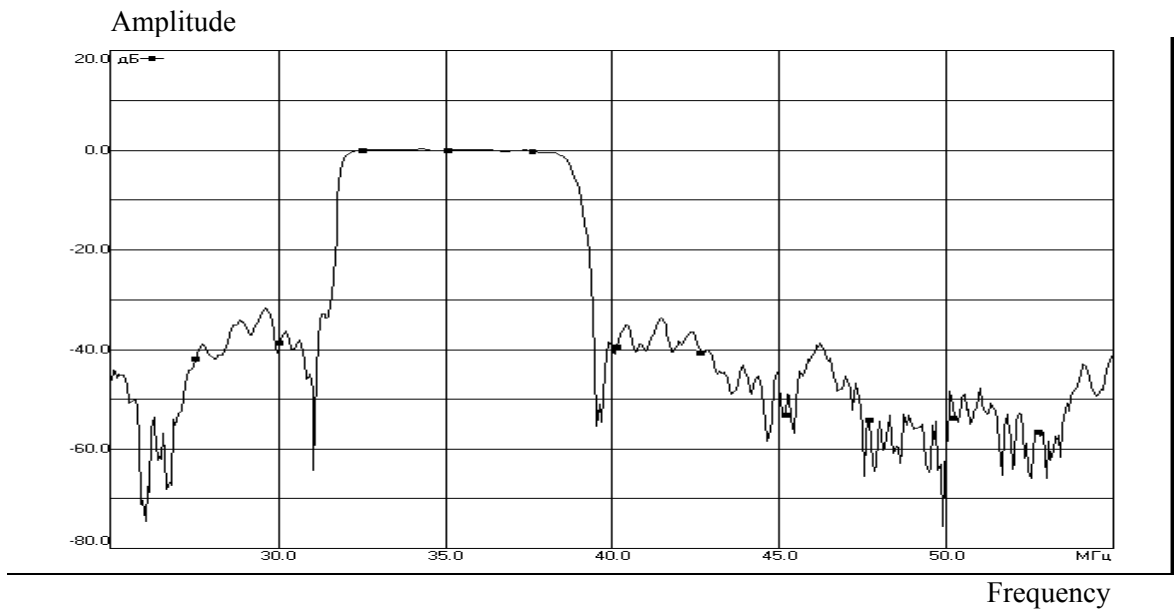
Pin configuration

- 1 - Input - ground
- 2 - Input
- 3 - Chip carrier - ground
- 4 - Output - ground
- 5 - Output

Characteristics (measuring conditions: T=25°C, $Z_{source}=75 \Omega$, $Z_{load}=75\Omega$)

Parameter	min.	max.	type	unit
Insertion attenuation at 36,5 MHz (reference level for the following data)		26,0	24,0	dB
Relative attenuation:				
38,0 MHz		1,0	0,5	dB
38,75 MHz		4,0	3,0	dB
32,0 MHz		3,0	1,0	dB
31,5 MHz	30		36	dB
25,0-31,5 MHz	30		34	dB
30,0 MHz	40		48	dB
39,5 MHz	32		36	dB
39,5-46,0 MHz	32		36	dB
Amplitude ripple				
32,25-38,5 MHz		1,8	1.1	dB
Reflected wave signal suppression 2,5 – 12,0 μ s after main pulse (test pulse: 250 ns, carrier frequency 38,0 MHz)	40		44	dB
Feedthrough signal suppression (test pulse: 250 ns, carrier frequency 38,0 MHz)	40		48	dB
Impedance at 36,5 MHz				
Input $Z_{in}=R_{in} // C_{in}$			0,8//26	k Ω //pF
Output $Z_{out} =R_{out} // C_{out}$			0,6//12	k Ω //pF
Group delay ripple (p-p)				
32,25-38,25 MHz			60	ns
Temperature coefficient of frequency			-72	ppm/ $^{\circ}$ K

Frequency response



Maximum ratings

Min ambient temperature	-10°C
Max ambient temperature	55°C
Min storage temperature	-60°C
Max storage temperature	55°C
DC voltage (between any terminals)	12 V
AC voltage (between any terminals)	10 V