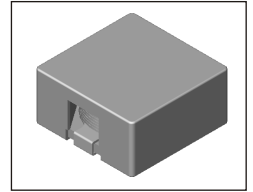


SMT Power Inductor

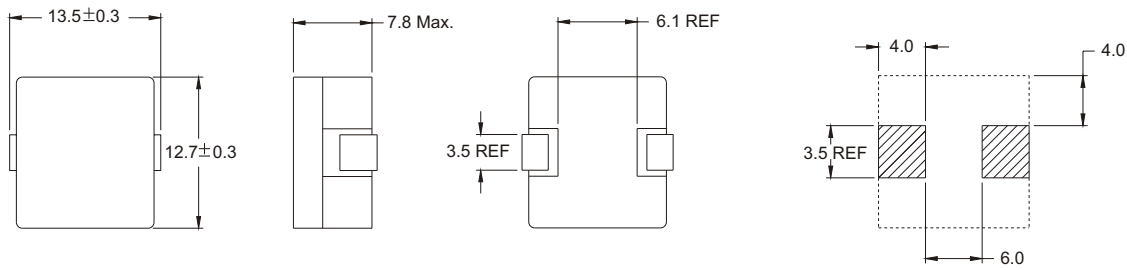
HCH1378 Type

Features

- Low profile, SMD type.
- High current.
- Magnetic shielded.
- High energy storage and low DCR.
- Provided with embossed carrier tape packing.
- Ideal for power source circuits, DC-DC converter, DC-AC inverters inductor applications.
- In addition to the standard versions shown here, custom inductors are available to meet your exact requirements.



Mechanical Dimension : Unit :mm



Electrical Characteristics :

PART NO.	L (uH)*	Li (uH)* *	DCR (mΩ) MAX	Is (Adc)
HCH1378-0R8	0.8	0.8 20%	1.2	40
HCH1378-1R2	1.2	1.2 25%	1.5	35
HCH1378-2R5	2.5	2.0 20%	3.0	22

★Tolerance of inductance : ± 20%

★★Li is the inductance at Isat.

★★★Test condition : 25°C , 100KHz, 1V



DELTA ELECTRONICS, INC.

(TAOYUAN PLANT CPBG) 252, SAN YING ROAD, KUEISAN INDUSTRIAL ZONE, TAOYUAN SHIEN, 333, TAIWAN, R.O.C.

TEL: 886-3-3591968; FAX: 886-3-3591991

<http://www.deltaww.com>