

**ROHM EEPROM
1.8V Low Voltage
operating**

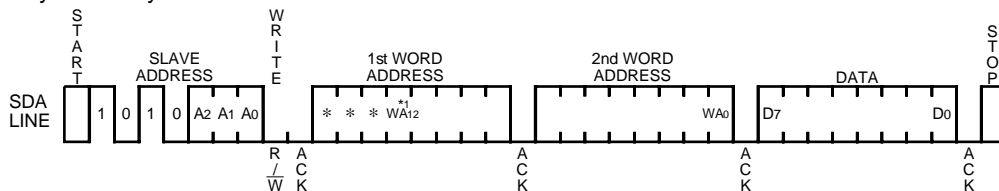
**ROHM EEPROM
1,000,000
Write cycle**

**ROHM EEPROM
Double Cell**

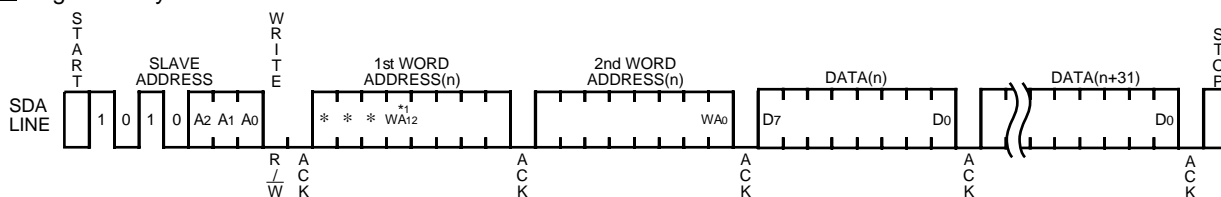
Serial 2 Wire Interface (I²C BUS Type)

Timing chart

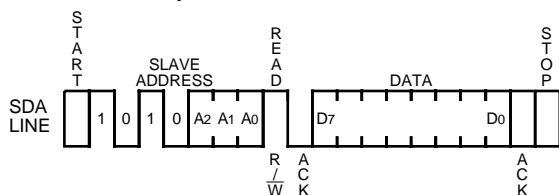
■ Byte write cycle



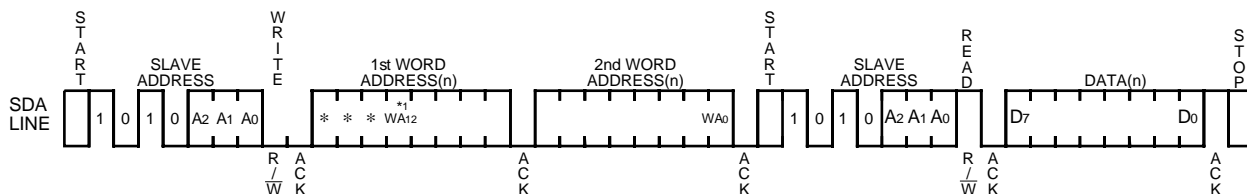
■ Page write cycle



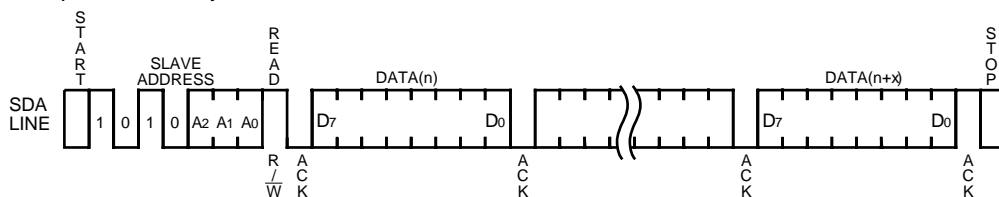
■ Current read cycle



■ Random read cycle



■ Sequential read cycle



*1: WA12...Don't Care (BR24L32)

Note : BR24C32/F has no letter "-W", but it is a double-cell type.

BR24C64/F is a single-cell type.

Please be careful not to confuse w-cell type and single-cell type. ("-W" means double-cell type.)