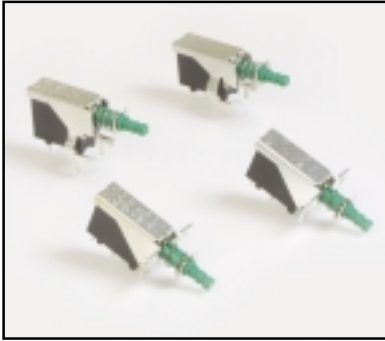


SERIES P197 SWITCHES

POWER PUSHBUTTON SERIES



SPECIFICATIONS

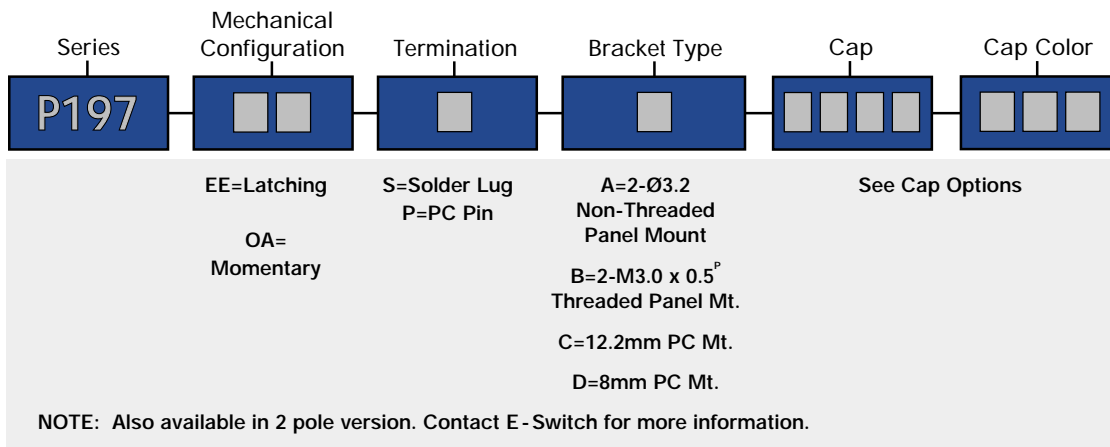
Rating:	10A @ 125 VAC - UL, CUL 5A @ 250 VAC - UL, CUL, VDE TV-5 @ 125 VAC - UL, CUL In Rush, 80A @ 250 VAC - VDE
Electrical Life:	10,000 cycles
Contact Resistance:	100mΩ max. typical; initial @ 2-4 VDC
Dielectric Strength:	> 1,500 volts 1 minute > 3,000 volts between poles
Operating Force:	300 ±100 gram force

MATERIALS

Housing:	6/6 Nylon
Actuator:	Acetal
Bracket:	Tin plated steel
Contacts:	Silver plated copper alloy
Terminals:	Silver plated copper alloy



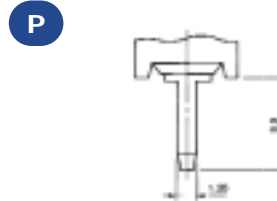
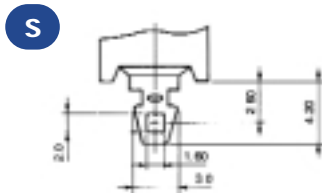
HOW TO ORDER



EXAMPLE

P197 → EE → P → B → TA12 → BLU

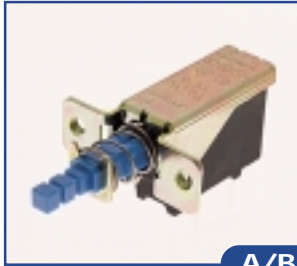
TERMINATION OPTIONS



SPECIFICATIONS SUBJECT TO CHANGE WITHOUT NOTICE.

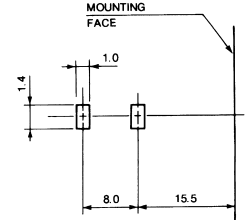
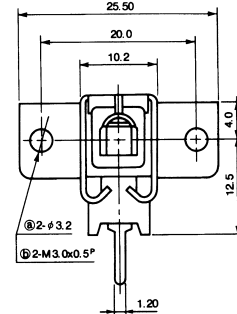
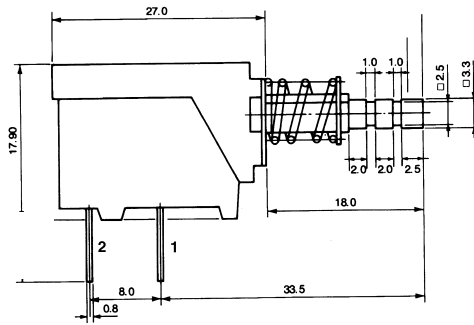
BRACKET OPTIONS

P.C. MOUNTING

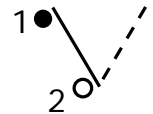


A/B

A = 2 - Ø3.2 (Non-Threaded)
B = 2 - M3.0 x 0.5P (Threaded)



Schematic

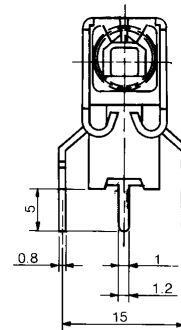
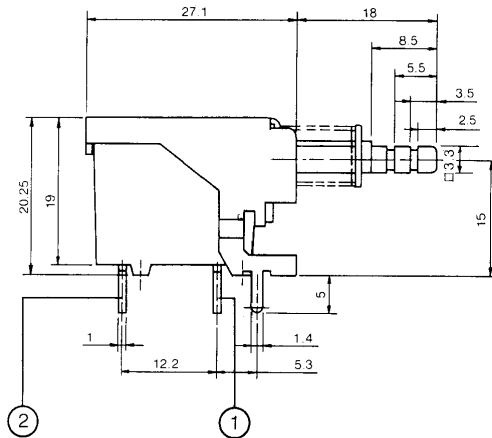


SPECIFICATIONS SUBJECT TO CHANGE WITHOUT NOTICE.

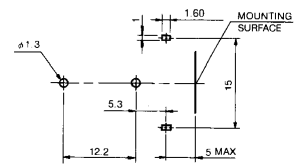


C

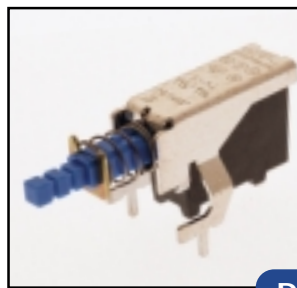
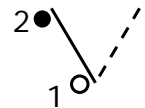
C = 12.2 mm P.C. Pin Spacing (measured from terminal 2 to terminal 1)



P.C. MOUNTING

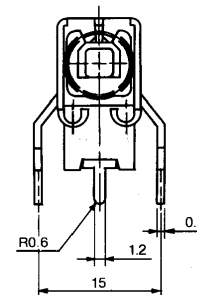
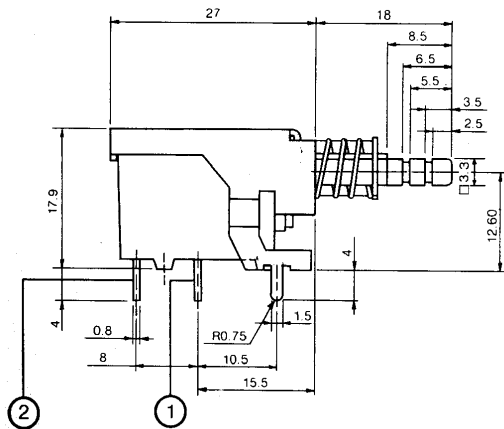


Schematic

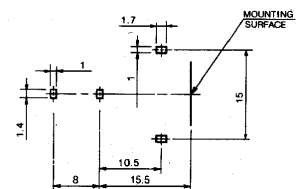


D

D = 8 mm P.C. Pin Spacing (measured from terminal 2 to terminal 1)



P.C. MOUNTING



Schematic

