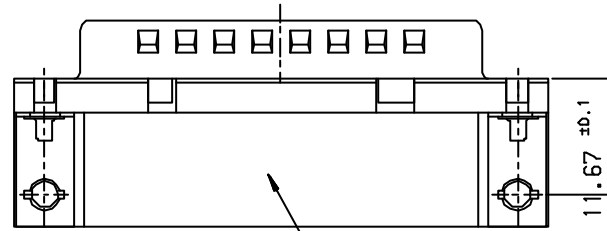
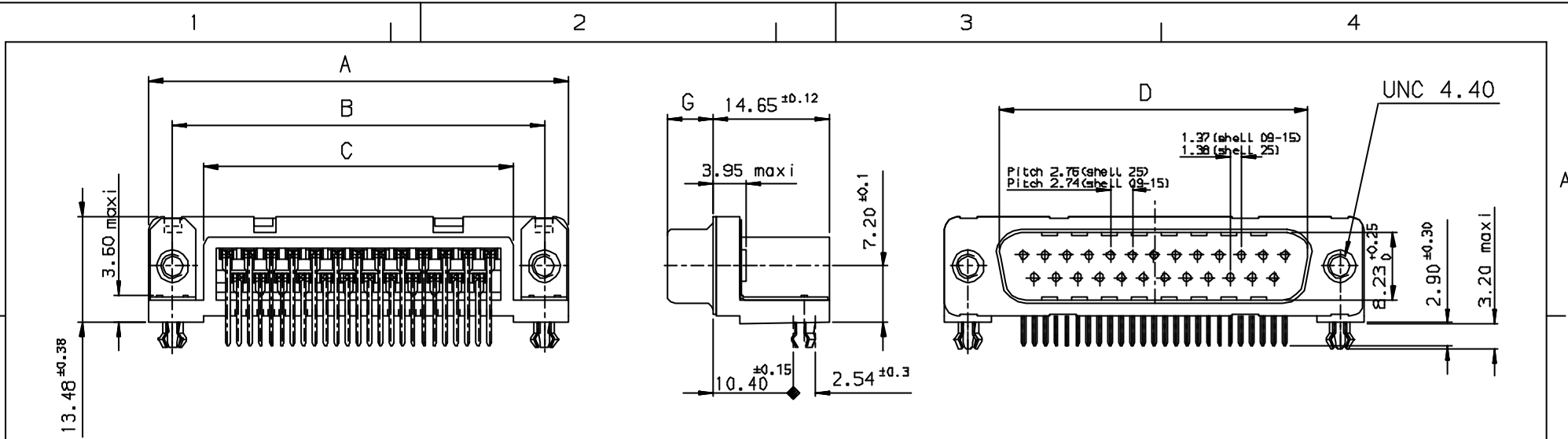


Tous droits strictement réservés. Reproduction ou communication à des tiers interdites sans autorisation écrite de la propriété de FCI. Droits de reproduction FCI.

**FCI**

All rights strictly reserved. Reproduction or communication in any form without the written authority from the proprietor. Property of FCI. Copyright FCI.

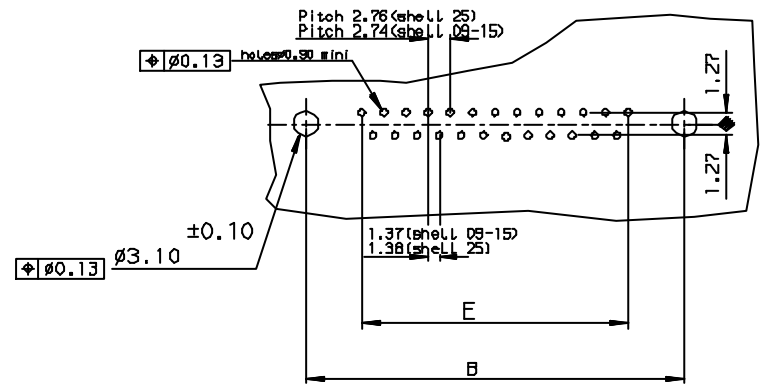


PC card drilling dimensions(after plating)  
[thickness 1.60±0.20mm]

Core range						
SHELL	A±0.38	B±0.12	C±0.10	D±0.25	G±0.25	PART NUMBER
D9	30.81	24.99	16.96	16.79	5.90	D09P13A4GX00**
15	39.14	33.32	25.18	25.12	5.90	D15P13A4GX00**
25	53.03	47.04	39.12	38.84	5.70	D25P13A4GX00**

GENERAL CHARACTERISTICS = SEE DRAWING C01-8646-0000

LF FOR LEAD FREE



Utr	Eon no	Dr	date
J	105-0124	J1	27/7/05

		Tolerance ✓ LINEAR ±0.1 ANGULAR ±1°		Projection MM	
Dr JOHN SLEEBA		1/8/94		Product Family D-5UB	
Eng GEORGE VJ		1/8/94		Spec ref	
Chr GEORGE VJ		27/7/05		Material	
Appr K Somasundaram		27/7/05		ECN	
<b>FCI</b> Title		MALE CONNECT.DELTA D RIGHT ANGLED WITH NUT, HARPOON & METAL PLATE.		Dwg no C01-8646-02B1	
Catalog no		DELTA-D		CUSTOMER COPY	
DATE		27/7/05		Sheet 1 of 1	

INDEX	DATE	REVISION DESCRIPTION
J	27/7/05	LEAD FREE DETAILS ADDED