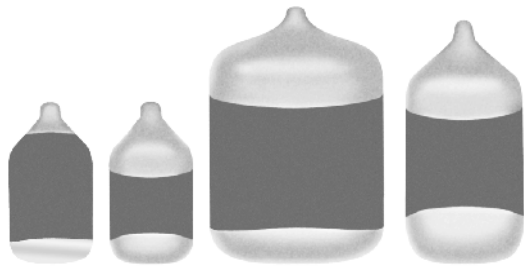


Solid Tantalum Chip Capacitors

TANTAMOUNT[®], Low Profile, Conformal Coated, Maximum CV



P case top P case bottom B and T cases Q, S and A cases

Images not to scale

FEATURES

- P case offers single-sided lead (Pb)-free terminations
- Wraparound lead (Pb)-free terminations: Q, S, A, B and T
- Low Impedance
- 8 mm and 12 mm tape and reel packaging available per EIA-481-1 and reeling per IEC 286-3 7" [178 mm] standard 13" [330 mm] available



RoHS
COMPLIANT

PERFORMANCE CHARACTERISTICS

Operating Temperature: - 55 °C to + 85 °C
(To + 125 °C with voltage derating)

Note: Refer to Doc. 40088

Capacitance Range: 2.2 μF to 220 μF

Capacitance Tolerance: ± 10 %, ± 20 % standard

Voltage Rating: 4 WVDC to 35 WVDC

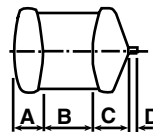
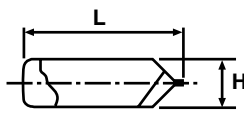
ORDERING INFORMATION

572D	336	X0	6R3	A	2	T
TYPE	CAPACITANCE	CAPACITANCE TOLERANCE	DC VOLTAGE RATING AT + 85 °C	CASE CODE	TERMINATION	REEL SIZE AND PACKAGING
	This is expressed in picofarads. The first two digits are the significant figures. The third is the number of zeros to follow.	X0 = ± 20 % X9 = ± 10 %	This is expressed in volts. To complete the three-digit block, zeros precede the voltage rating. A decimal point is indicated by an "R" (6R3 = 6.3 volts).	See Ratings and Case Codes Table.	2 = 100 % Tin 4 = Gold Plated	T = Tape and Reel 7" [178 mm] Reel W = 13" [330 mm] Reel

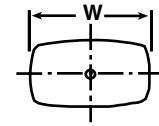
Note: Preferred Tolerance and reel sizes are in **bold**.

We reserve the right to supply higher voltage ratings and tighter capacitance tolerance capacitors in the same case size.

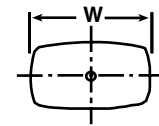
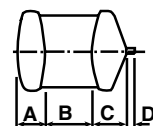
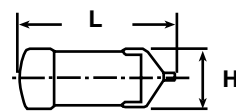
DIMENSIONS in inches [millimeters]



Single-side electrodes
(Both electrodes at bottom side only)



CASE CODE	L (Max.)	W	H	A	B	C	D (Ref.)
P	0.087 ± 0.012 [2.2 ± 0.3]	0.049 ± 0.012 [1.25 ± 0.3]	0.039 ± 0.008 [1.0 ± 0.2]	0.024 ± 0.012 [0.6 ± 0.3]	0.031 ± 0.012 [0.8 ± 0.3]	0.031 ± 0.012 [0.8 ± 0.3]	0.008 [0.2]



CASE CODE	L (Max.)	W	H	A	B	C	D (Ref.)
Q	0.126 ± 0.008 [3.2 ± 0.2]	0.063 ± 0.008 [1.6 ± 0.2]	0.031 ± 0.008 [0.8 ± 0.2]	0.031 ± 0.008 [0.8 ± 0.2]	0.047 ± 0.008 [1.2 ± 0.2]	0.031 ± 0.008 [0.8 ± 0.2]	0.008 [0.2]
S	0.126 ± 0.012 [3.2 ± 0.3]	0.063 ± 0.012 [1.6 ± 0.3]	0.039 ± 0.008 [1.0 ± 0.2]	0.031 ± 0.012 [0.8 ± 0.3]	0.047 ± 0.012 [1.2 ± 0.3]	0.031 ± 0.012 [0.8 ± 0.3]	0.008 [0.2]
A	0.126 ± 0.012 [3.2 ± 0.3]	0.067 ± 0.012 [1.7 ± 0.3]	0.05 ± 0.012 [1.3 ± 0.3]	0.031 ± 0.012 [0.8 ± 0.3]	0.047 ± 0.012 [1.2 ± 0.3]	0.031 ± 0.012 [0.8 ± 0.3]	0.008 [0.2]
B	0.130 ± 0.012 [3.3 ± 0.3]	0.106 ± 0.012 [2.7 ± 0.3]	0.066 ± 0.012 [1.7 ± 0.3]	0.031 ± 0.012 [0.8 ± 0.3]	0.047 ± 0.012 [1.2 ± 0.3]	0.043 ± 0.012 [1.1 ± 0.3]	0.008 [0.2]
T	0.138 ± 0.008 [3.5 ± 0.2]	0.106 ± 0.008 [2.7 ± 0.2]	0.039 ± 0.008 [1.0 ± 0.2]	0.031 ± 0.008 [0.8 ± 0.2]	0.047 ± 0.008 [1.2 ± 0.2]	0.043 ± 0.008 [1.1 ± 0.2]	0.008 [0.2]



Solid Tantalum Chip Capacitors
TANTAMOUNT®, Low Profile, Conformal Coated, Maximum CV

Vishay Sprague

RATINGS AND CASE CODE						
µF	4 V	6.3 V	10 V	16 V	25 V	35 V
	STD	STD	STD	STD	STD	STD
2.2					Q	
4.7					A/S	B*
6.8						
10			P		A	
15						
22				A/B/T*/S*		
33	P	A/P/Q/S	A/S*			
47		Q/S	A*			
68		S				
100		A/B/T	B			
220	B/B**/T	B				

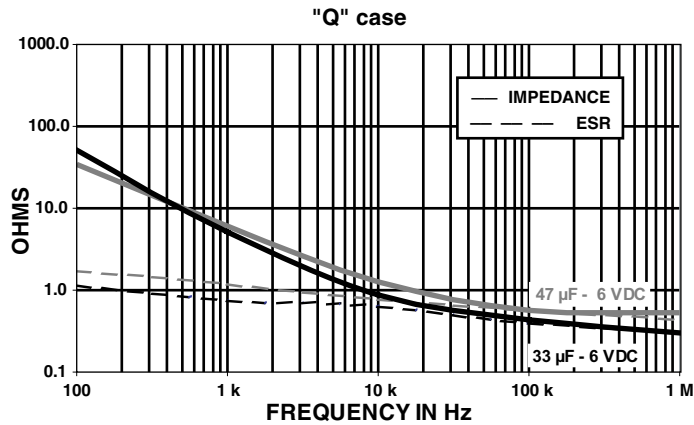
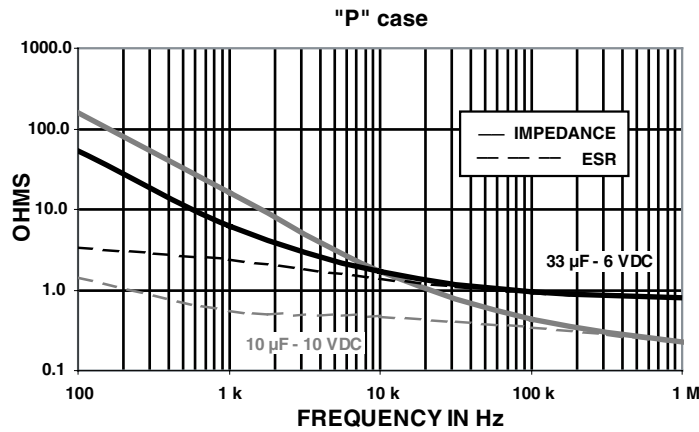
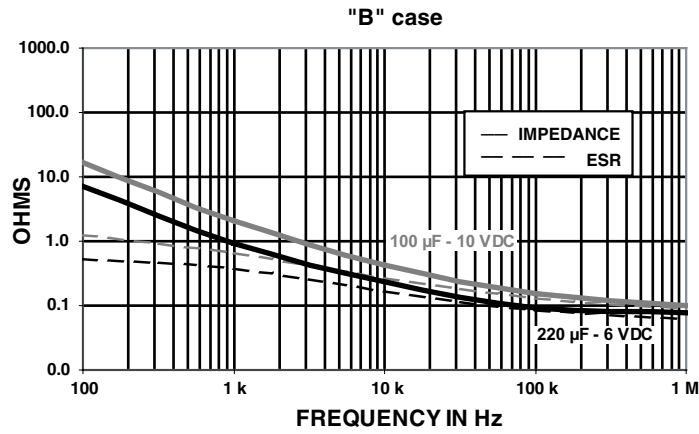
* Contact factory for availability

STANDARD/EXTENDED RATINGS						
CAPACITANCE (µF)	CASE CODE	PART NUMBER	MAX. DCL AT + 25 °C (µA)	MAX. DF AT + 25 °C 120 Hz (%)	MAX. ESR AT + 25 °C 100 kHz (Ohms)	MAX. RIPPLE 100 kHz Irms (Amps)
4 WVDC AT + 85 °C, SURGE = 5.2 V . . . 2.7 WVDC AT + 125 °C, SURGE = 3.4 V						
33	P	572D336X_004P2_001**	1.32	14	1.5	0.13
220	B	572D227X_004B2_	8.8	16	0.2	0.63
220	B	572D227X_004B2_001**	8.8	16	0.2	0.63
220	T	572D227X_004T2_	8.8	26	0.6	0.37
220*	S	572D227X_004S2_*	8.8*	25*	0.8*	0.26*
6.3 WVDC AT 85 °C, SURGE = 8 V . . . 4 WVDC AT + 125 °C, SURGE = 5 V						
33	A	572D336X_6R3A2_	2.1	8	0.8	0.29
33	P	572D336XO6R3P2_	2.1	14	1.5	0.13
33	Q	572D336X_6R3Q2_	2.1	10	2.0	0.17
33	S	572D336X_6R3S2_	2.1	10	1.0	0.24
47	Q	572D476X_6R3Q2_	3.0	10	1.1	0.22
47	S	572D476X_6R3S2_	3.0	10	0.9	0.25
68	S	572D686XO6R3S2_	4.3	12	0.9	0.26
100	A	572D107X_6R3A2_	6.3	14	0.5	0.36
100	B	572D107X_6R3B2_	6.3	14	0.4	0.45
100	T	572D107X_6R3T2_	6.3	14	0.5	0.36
220	B	572D227X_6R3B2_	13.9	16	0.2	0.63
10 WVDC AT + 85 °C, SURGE = 13 V . . . 7 WVDC AT + 125 °C, SURGE = 8 V						
10	P	572D106X_010P2_	1.0	8	3.0	0.09
33	A	572D336X_010A2_	3.3	10	0.8	0.29
33*	S*	572D336X_010S2_*	3.3*	10*	1.1*	0.23*
47*	A*	572D476X_010A2_*	4.7*	10*	0.8*	0.28*
100	B	572D107X_010B2_	10	14	0.4	0.45
16 WVDC AT + 85 °C, SURGE = 20 V . . . 10 WVDC AT + 125 °C, SURGE = 12 V						
22	A	572D226X_016A2_	3.5	8	1.4	0.22
22	B	572D226X_016B2_	3.5	6	0.5	0.45
22*	S*	572D226X_016S2_*	3.5*	8*	1.4*	0.22*
22*	T*	572D226X_016T2_*	3.5*	8*	1.4*	0.24*
25 WVDC AT + 85 °C, SURGE = 32 V . . . 17 WVDC AT + 125 °C, SURGE = 20 V						
2.2	Q	572D225X_025Q2_	0.65	6	5.0	0.10
4.7	A	572D475X_025A2_	1.2	6	2.0	0.18
4.7	S	572D475X_025S2_	1.2	8	4.0	0.12
10	A	572D106X_025A2_	2.5	10	3.5	0.15
35 WVDC AT + 85 °C, SURGE = 46 V . . . 23 WVDC AT + 125 °C, SURGE = 28 V						
4.7*	B*	572D475X_035B2_*	1.7*	6*	1.6*	0.22*

* = 1.7 mm Max. height, 572D227X_004B2_001 and 1.0 mm Max. height, 572D336X_004P2_001
For 10 % tolerance, specify "9"; For 20 % tolerance change to "0".



TYPICAL CURVES AT + 25 °C, IMPEDANCE AND ESR VS FREQUENCY





Notice

Specifications of the products displayed herein are subject to change without notice. Vishay Intertechnology, Inc., or anyone on its behalf, assumes no responsibility or liability for any errors or inaccuracies.

Information contained herein is intended to provide a product description only. No license, express or implied, by estoppel or otherwise, to any intellectual property rights is granted by this document. Except as provided in Vishay's terms and conditions of sale for such products, Vishay assumes no liability whatsoever, and disclaims any express or implied warranty, relating to sale and/or use of Vishay products including liability or warranties relating to fitness for a particular purpose, merchantability, or infringement of any patent, copyright, or other intellectual property right.

The products shown herein are not designed for use in medical, life-saving, or life-sustaining applications. Customers using or selling these products for use in such applications do so at their own risk and agree to fully indemnify Vishay for any damages resulting from such improper use or sale.