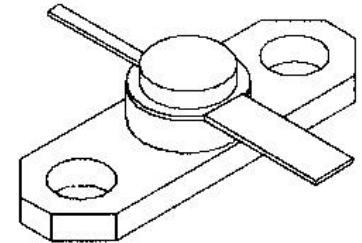
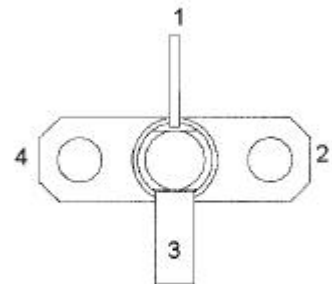


MS3023
**RF & MICROWAVE TRANSISTORS
GENERAL PURPOSE AMPLIFIER
APPLICATIONS**
Features

- GOLD METALIZATION
- Pout = 3.0 W MINIMUM
- 2.0 GHz
- Gp = 7.8 dB
- INFINITE VSWR CAPABLE @ RATED CONDITIONS
- HERMETIC PACKAGE
- COMMON BASE CONFIGURATION

DESCRIPTION:

The MS3023 is a common base, hermetically sealed silicon NPN microwave power transistor. This device is designed for Class C applications in the 1 - 2 GHz frequency range. Gold metalization and emitter ballasting provide long-term reliability and superior ruggedness.


.250 2LFL (M210)
PIN CONNECTION

1. Collector 3. Emitter
2. Base 4. Base

ABSOLUTE MAXIMUM RATINGS (Tcase = 25°C)

Symbol	Parameter	Value	Unit
P _{DISS}	Power Dissipation*	21.8	W
V _{CC}	Collector-Supply Voltage*	35	V
I _C	Device Current*	600	mA
T _J	Junction Temperature	200	°C
T _{STG}	Storage Temperature	-65 to +200	°C

THERMAL DATA

R _{TH(J-C)}	Thermal Resistance Junction-case	8.0	°C/W
----------------------	----------------------------------	-----	------

*Applies only to rated RF amplifier operation

ELECTRICAL SPECIFICATIONS (T_{case} = 25°C)

STATIC

Symbol	Test Conditions	Value			Unit
		Min.	Typ.	Max.	
BV_{CBO}	I_C = 1 mA I_E = 0 mA	45	---	---	V
BV_{CER}	I_C = 5 mA R_{BE} = 10 Ω	45	---	---	V
BV_{EBO}	I_E = 1 mA I_C = 0 mA	3.5	---	---	V
I_{CBO}	V_{CE} = 28 V	---	---	1.0	mA
H_{FE}	V_{CE} = 5 V I_C = 200 mA	15	---	120	---

DYNAMIC

Symbol	Test Conditions	Value			Unit
		Min.	Typ.	Max.	
P_{OUT}	f = 2.0 GHz P_{IN} = 0.5 W V_{CC} = 28V	3.0	---	---	W
G_P	f = 2.0 GHz P_{IN} = 0.5 W V_{CC} = 28V	7.8	---	---	dB
η_C	f = 2.0 GHz P_{IN} = 0.5 W V_{CC} = 28V	35	---	---	%
C_{OB}	f = 1 MHz V_{CB} = 28V	---	---	6.5	pF

IMPEDANCE DATA

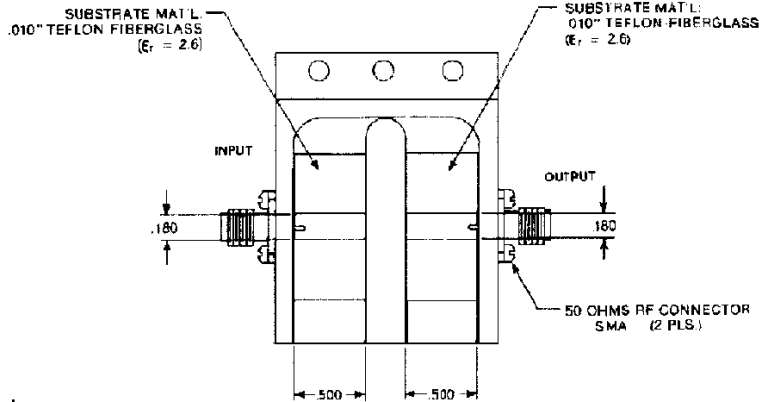
FREQ	Z _{IN} (Ω)	Z _{CL} (Ω)
1.0 GHz	4.4 + j5.5	9.6 + j16.0
1.5 GHz	4.5 + j9.0	4.3 + j7.0
2.0 GHz	4.6 + j12.5	3.0 + j1.0

P_{IN} = 0.5W V_{CC} = 28V

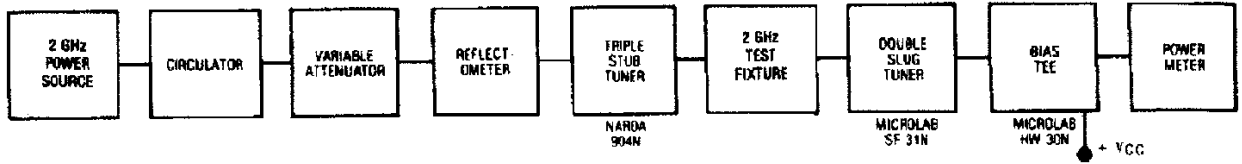
TEST CIRCUIT

Ref.: Dwg. No. C125518

All dimensions are in inches.
Frequency 2.0 GHz

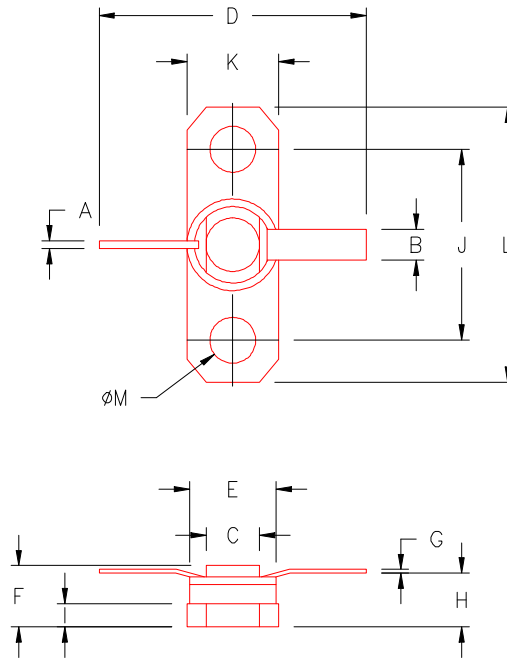


RF Amplifier Power Output Test



PACKAGE MECHANICAL DATA

PACKAGE STYLE M210



	MINIMUM INCHES/MM	MAXIMUM INCHES/MM		MINIMUM INCHES/MM	MAXIMUM INCHES/MM
A	.028/0,71	.032/0,81	J	.560/14,22	.570/14,48
B	.110/2,80	.117/2,97	K	.245/6,22	.255/6,48
C	.165/4,19	.185/4,70	L	.790/20,07	.810/20,57
D	.740/18,80		M	.128/3,25	.132/3,35
E	.225/5,72	.235/5,97			
F	.149/2,30	.187/4,75			
G	.003/0,08	.007/0,18			
H	.117/2,97	.133/3,38			
I	.058/1,47	.068/1,73			